



## WiFi SMART THREE PHASE ENERGY METER & PROTECTOR



LIVE ELECTRICAL DISTRIBUTION UK LTD

4 Queensmead Place, Textilose Road, Manchester, M17 1PH  
Tel: 0161 8702592 Web: [www.liveelectrical.co.uk](http://www.liveelectrical.co.uk)  
E-mail: [sales@liveelectrical.co.uk](mailto:sales@liveelectrical.co.uk)



Ensure that these instructions are made available to the end user for future reference.

## WiFi SMART THREE PHASE ENERGY METER & PROTECTOR

### Main Functions

- Over Voltage Protection.
  - Under Voltage Protection.
  - Over Current Protection.
  - Under Current Protection.
  - Delay Protection.
  - Timer Switch.
  - Voltage Imbalance Protection.
  - Current Imbalance Protection.
  - Shortage Phase Protection.
  - Phase Sequence Protection.
  - High Temperature Protection.
  - Bidirectional Energy Monitor
- Each Parameter Can Be Set With Action Threshold and On/Off.

### Backlight

- Light Up Time: The display will keep lighting up for 180 seconds without any actions.
- Color: The backlight color is white during normal working, it will turns to be red when the relay disconnected.

### Technical Data

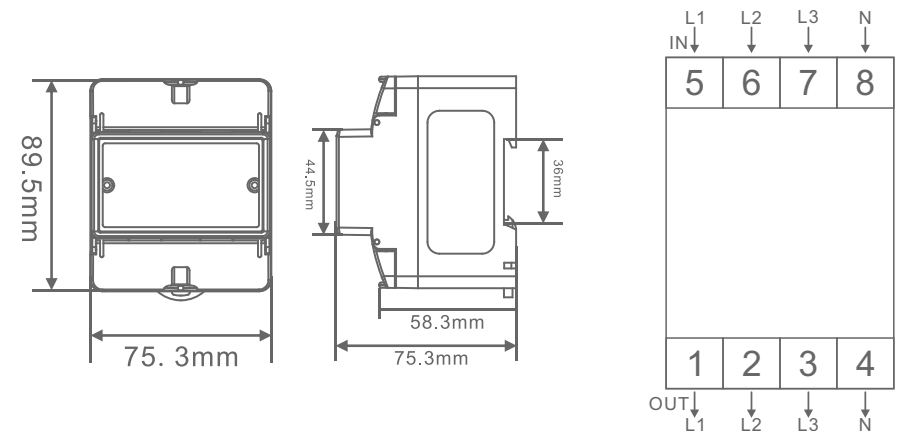
Temperature	-20°C~60°C
Humidity	<85%
Altitude	not exceeding 2000m
Pollutionlevel	Level 3
Installation	35mm Din Rail
Max terminal cable capacity	35mm <sup>2</sup>
Rated current	1-100A
Rated voltage	60V-300V
Operating frequency	50/60Hz
Compliance standard	EN/IEC60934

Part No	Description
MP3100	3P+N 1-100A Adjustable WiFi Smart Three Phase Energy Meter

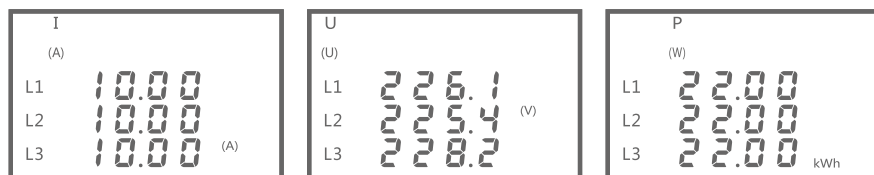
### Precautions

- This product has no isolation function. Please disconnect the front stage when repairing the circuit breaker switch.
- The neutral line (N line) of this product is directly connected without disconnection function.
- The protector must be wired according to the markings and must be connected correctly.
- Although this product has limited current protection function, it cannot replace circuit breakers, please install circuit breakers such as 100A MCB at the front or the end of the line for short circuit protection.
- Before use, please tighten the clamp screw to avoid product damaged caught by poor connection.

### Wiring and Dimensions



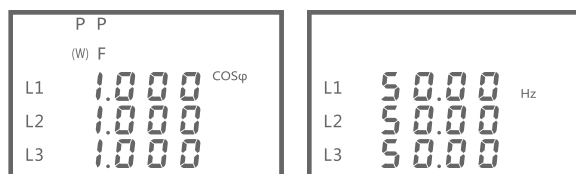
Press the up and down buttons to switch and display the voltage, current, power consumption, power factor frequency.



Real Time Current

Real Time Voltage

Real Time Power



Real Time Power Factor

Real Time Frequency

### Fault Record

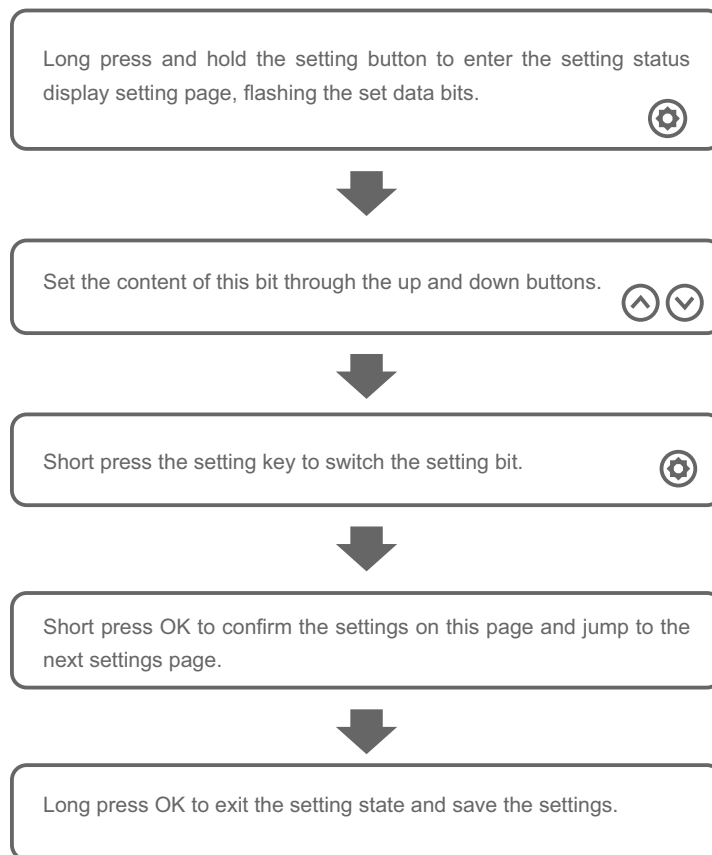
Record overvoltage, undervoltage, overload, low current protection, voltage imbalance, current imbalance and phase sequence protection.

Note: Tuya App Record.

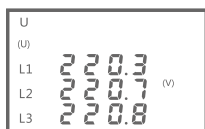
### Wifi Indicator Status

1. Flashing indicates searching for WiFi signal.
2. Slow flashing indicates WiFi is offline.
3. Long lights indicates WiFi is connected.

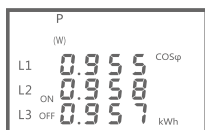
### Function Settings



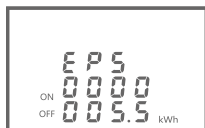
Display The "Voltage" Interface: Long press and hold to configure WIFI, and switch the display to EPS(combined active power), long press and hold to clear the power, and display the "frequency Interface" restore factory configuration.



Phase Voltage



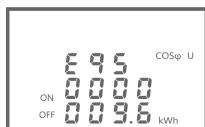
Three Phase Reactive Power



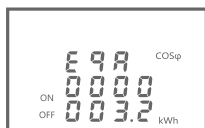
Active Combined Energy Consumption



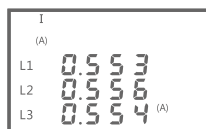
Active A-Phase Energy Consumption



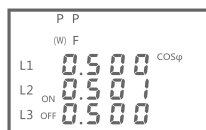
Combined Reactive Energy Consumption



Reactive Phase A Energy Consumption



Three Phase Current



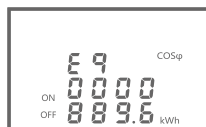
Three Phase Power Factor



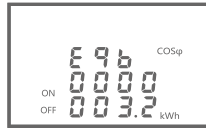
Active Forward Energy Consumption



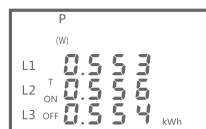
Active B-Phase Energy Consumption



Reactive Forward Energy Consumption



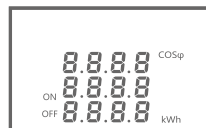
Reactive Phase B Energy Consumption



Three Phase Active Power



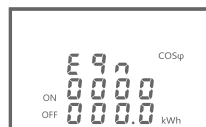
Three Phase Frequency



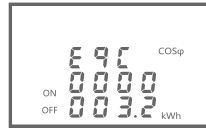
Active Reverse Energy Consumption



Active C-Phase Energy Consumption





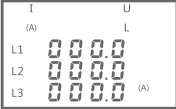


Reactive Reverse Energy Consumption






Reactive Phase C Energy Consumption

Function	Set Parameter Range	Factory Default Settings	Function Description
Power Restoration Delay Protection	----(Hand Movement) 0000-9999Second(S)	5S	<p>This function is to protect the device being destroyed by instantaneous high voltage and surge during power restoration.</p>
Over Voltage Limit	60-300V	275V	<p>If the over voltage limit is set at 300V, when the voltage is over 300V, the device will automatically switch off. (Every phase can be set separately).</p>
Under Voltage Limit	60-300V	175V	<p>If the under voltage limit is set at 60V, when the voltage is under 60V, the device will automatically switch off. (Every phase can be set separately).</p>
Under Voltage And Over Voltage Protection Delay	----(Hand Movement) 0000-9999Second(S)	20S	<p>If the voltage is over or under the set value, the device will automatically switch off and when the voltage returns to normal value it will revoer after the set delay time.</p>
Under Current Limit	0.0-60A	0.0A	<p>If the under current limit is set at 60A, the device will automatically switch off when the current is under 60A after the set delay time. (Every phase can be set separately).</p>

---- Stands for : Manual Recovery  
0000 Stands for: Immediate Recovery

Function	Set Parameter Range	Factory Default Settings	Function Description
Under Current Limit Delay Protection	0000-9999Second(S)	5S	 <p>When the current is under the setting value, the device will automatically switch off after the delay time.</p>
Under Current Limit Protection Delay	0000-9999Second(S)	20S	 <p>When the current recovers to be over the setting value, the device will automatically switch on after the delay time.</p>
Over Current Limit	0.1-80V	80A	 <p>If the over current limit is set at 80A, the device will automatically switch off when the current is over 80A after the set delay time. (Every phase can be set separately).</p>
Over Current Limit Delay Protection	0000-9999Second(S)	5S	 <p>When the current is over the setting value, the device will automatically switch off after the delay time.</p>
Over Current Limit Protection Delay	0000-9999Second(S)	60S	 <p>When the current recover to be under the setting value, the device will automatically switch on after the delay time.</p>

Function	Set Parameter Range	Factory Default Settings	Function Description
Uneven Voltage Balance Protection%	On/off 0000-9999%	On	 <p>The device will switch off if the highest or lowest voltage of ABC phase exceed the set value.</p>
Current Unevenness Protection %	On/off 0000-9999%	On	 <p>The device will switch off if the highest or lowest current of ABC phase exceed the set value.</p>
Phase Sequence Protection	On/off	On	 <p>The device will switch off if there is any phase error in the ABC phase sequence.</p>