

RELAYS

VOLTAGE MONITOR VMT4

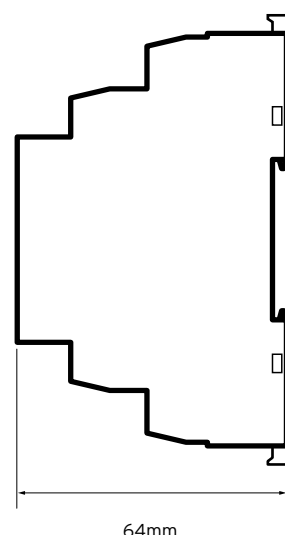


Din rail mounting single phase over and under voltage monitor in a din style housing. LED indication for supply and output. Adjustable time delay. Fixed hysteresis. Can monitor 101 - 318V AC

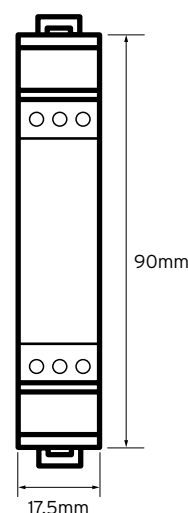
General Characteristics

Standards	EN60255-1, EN60947-5-1
Number of poles	2 x SPDT
Contact material	AgNi
Rated Current	8A
Supply Voltage	127 - 230 V AC/DC
Supply Frequency	45/65 Hz
Measuring Range	101 - 318 V
Hysteresis	2% fixed
Asymmetry threshold	5 - 15%
Threshold voltage adjustable	2% - 20%
Adjustable time delay	0.1 - 10s
Reset time	1s maximum
Mechanical life	10 000 000 ops
Electrical life	100 000 ops
Terminal Capacity	up to 2.5mm ²
Terminal type	Screw Clamp
Tightening Torque	0.7 Nm
Width	17.5mm
Height	90mm
Depth	64mm
Weight	72g

Technical Drawing



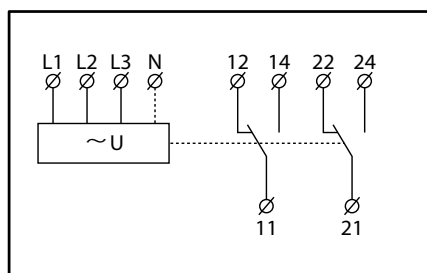
64mm



90mm

17.5mm

Wiring Diagram



Additional Information

This product is for use by skilled persons or instructed persons. The installation of this product must comply with current IEE regulations. Terminals, including those factory fitted, must be checked for correct tightness before commissioning. All terminals should be periodically checked for correct tightness. The data herein serves only to describe the product and should not be regarded as representing guaranteed properties in the legal sense. We reserve the rights of modification, whilst every care has been taken in ensuring the accuracy of this catalogue, the Supplier accepts no liability whatsoever for any eventuality arising from errors or omissions within its catalogues, brochures or within any online presence.