

**FDC89 - PUSH IN METAL CLIPS**

**Description:**

Push-in Metal Clips are easy to install and fixes securely in a variety of substrates.

*Simply follow these steps:*

1. Drill Hole
2. Slide onto Cable
3. Push flush to wall



**OTHER ADDITIONAL INFORMATION**

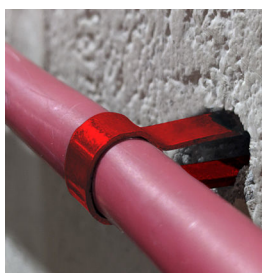
Code	Size
FDC68R	To suit: 6-8mm Red
FDC68B	To suit: 6-8mm Black
FDC68W	To suit: 6-8mm White

**Step 1:**



1. Drill a hole

**Step 2:**



2. Slide clip onto cable

**Step 3:**



3. Push flush to wall

