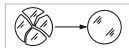


Crystal Flush Light Fitting (35612)

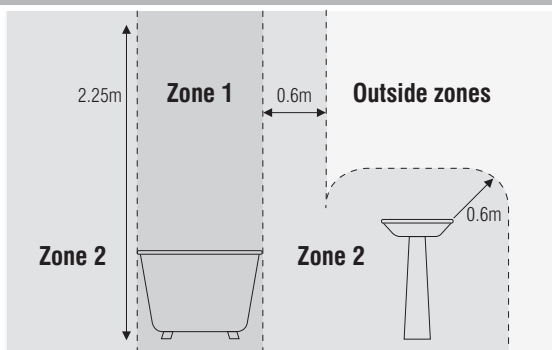
INSTRUCTION MANUAL

Safety Warnings

- ☐ **This light fitting is double insulated (class 2) and does not require connection to an Earth circuit.**
- Please read these instructions carefully before commencing any work.
 - This unit must be fitted by a competent and qualified electrician.
 - Install in accordance with IEE Wiring regulations and current Building Regulations.
 - To prevent electrocution switch off at mains supply before installing or maintaining this fitting. Ensure other persons cannot restore the electrical supply without your knowledge. If you are in any doubt, please consult a qualified electrician.
 - This light fitting should be connected to a fused circuit.
 - If replacing an existing fitting, make a careful note of the connections.
 - When changing a bulb, always switch off at the mains and allow the old bulb to cool down before handling. Dispose of used bulbs carefully and responsibly. Do not exceed the wattage stated or use a different shape bulb from that indicated on the fitting.
 - This product is suitable for dimming when used in conjunction with a dimmable lamp. Please ensure verification of dimming abilities with the lamp manufacture prior to use.
 - Waste electrical products should not be disposed of with household waste. Please recycle where facilities exist. Check with your local authority or retailer for recycling advice.
 - We recommend cleaning with a soft dry cloth. Do not use solvents or abrasive cleaners as these could damage the finish. Glass parts – Remove and wash in warm water or just use a damp cloth. Do not use abrasive materials as these will damage the finish.
 - This product is not suitable for location in or near a marine or sea environment.
 - This product is rated at IP44.
 - If the glass or diffuser is broken or cracked it must be replaced, please consult your retailer. This is the symbol which denotes this requirement:



Zone Information



This product has special protection against the ingress of moisture and is IP44 rated.

This product is suitable for use in Zone 1, Zone 2, and outside Zones of a bathroom. If fitting in a bathroom a 30mA RCD must be fitted in accordance with IEE wiring regulations.

Assembly/ User Instructions

Before you start

Please read these instructions carefully before fitting and retain for reference. Check the packaging and make sure that you have all the required parts. Follow each assembly step in order to prevent incorrect assembly. Ensure that the product is fully assembled as illustrated before use.

The Light pack contains:

Light fitting.
Terminal connection block(s).
Fixing pack.

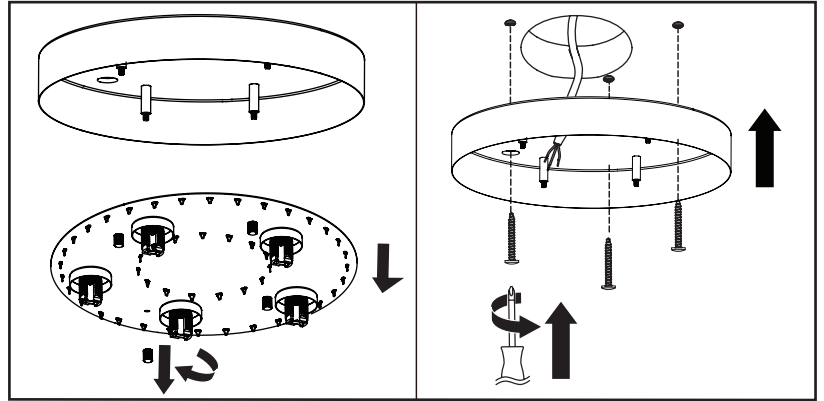
The following tools may be required:

Selection of cross and flat head screwdrivers.
Electric drill and assorted drill bits.
Wire strippers.
Electrical insulation tape.

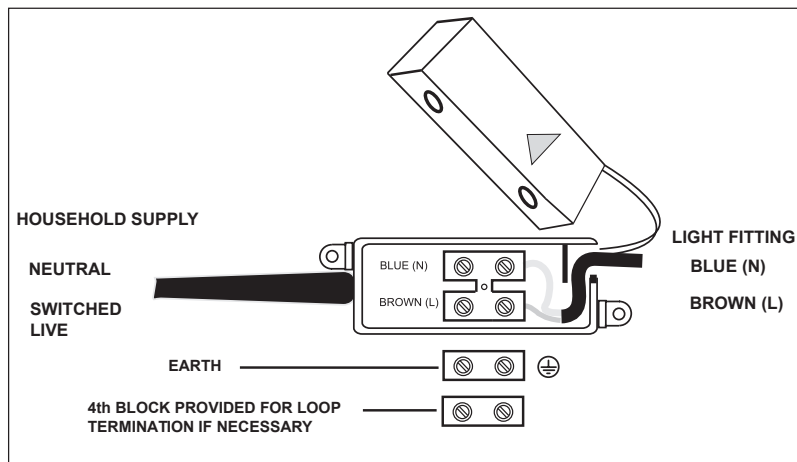
Assembly/ User Instructions Continued

These assembly diagrams are intended as a guide – if in doubt consult a qualified electrician.

Remove the tray by unscrewing the metal finials and set aside for refitting later. Using the ceiling cover as a template, mark and drill the fixing holes. Ensure there is a joist at the point of fixing to support the weight of the product. Take care to avoid damaging any concealed wiring and pipes. Locate the fixing screws through the holes in the ceiling cover and screw directly into the ceiling



Having identified the household wiring from your existing light fitting, connect to the connection block inside the product in the following way:



Check that:-

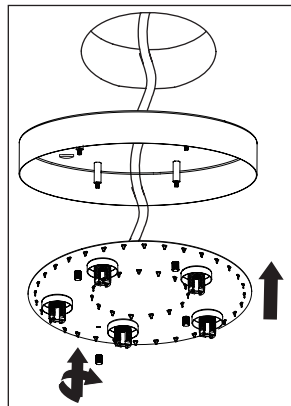
- you have correctly identified the house wires,
- the connections are tight,
- no loose strands have been left out of the connection block
- the terminal block box cover is securely re-fitted.

Please note: To terminate the incoming earth cable you must either use good quality insulation tape or the spare connection block supplied. In both cases wrap the connection in insulation tape covering at least 2cm of the wiring.

A fourth connection block is provided should you need it to make loop connection. You must then wrap the connection block in tape covering at least 2cm of the wiring on each side.

When completed, ensure that there are no bare or loose strands of wire exposed, and cover all exposed areas of the connection block with 2 layers of insulation tape.

Refit the tray set aside earlier.



Fitting/Replacing the bulbs - Max. 18W G9

During use the bulb and light fitting get very hot. Switch off the product and allow the bulb to cool before changing the bulb. Avoid directly touching the bulbs as this will shorten their life. Do not exceed the wattage stated on the fitting. If you use bulbs with a higher wattage the lamp holder could be damaged. Gently push the bulb pins into the lampholders, then screw the glass shades in place. Ensure seals are tight to maintain IP protection. Refer to drawing on right.

Fitting the crystals

There are 62 crystals to attach - 42 on the outer ring and 20 on the inner ring. Attach the crystals by attaching the metal loop on each crystal to the pre-installed fixing loops on the tray.

Replace fuse or circuit breaker and switch on. Your light is now ready for use.

