

# LOOX5 12V/24V MODULAR SENSOR SWITCHES

Motion sensor infrared modular switches for installation of monochrome 8 mm LED strip lights in Loox5 aluminium profiles.

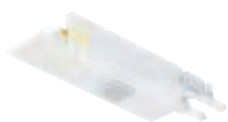


12V version - Photo shows switch in use  
(please order profile and lead separately)



24V version - Photo shows switch in use  
(please order profile and lead separately)

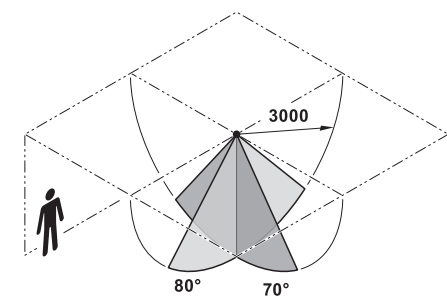
## Loox5 modular motion sensor infrared switch for aluminium profiles - switching function soft on/off, automatic



12V version



24V version



Detection range

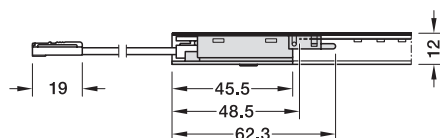


Illustration shows switches in use  
(Please order profile and cable separately)

- > For monochromatic 8 mm Loox5 LED strip lights in Loox5 aluminium profiles
- > Suitable for Loox5 profiles: 1103, 1105, 2101, 2102, 2103, 2104
- > Installation: For sliding into aluminium profile
- > Sensor range: 3000 mm
- > Sensor angle: 80°
- > Sensor angle vertical: 70°
- > Delay: 60 seconds
- > Switched outputs: 1x Clip, Loox5 LED strip 8 mm monochrome
- > Supplied with:  
1x motion detector, Loox5 modular with catch 2-pole 12 V or 24 V
- > Opal coloured plastic
- > Order qty: 1 pc



Installation reference:  
Shorten LED strip light by approx. 50 mm in relation to the total length of the aluminium profile. Shorten diffuser by 45.5 mm

5 12 V

5 24 V

Voltage	Power rating wattage	Cat. No.
12 V	60W	833.89.282
24 V	120 W	833.89.292



- > For use with Loox5 aluminium profiles 1103, 1105, 2101, 2102, 2103, 2104, shown on pages **5.184-185** and **5.190-192**
- > Please order lead (modular with Loox5 2-pin snap-in connector) separately. Please note nominal voltage and current carrying capacity. 12 V/5 A, 2000 mm: Cat. No. 833.95.830, 24 V/5 A, 2000 mm: Cat. No. 833.95.835