

Häfele Connect Mesh Eco - Set Box Monochrome and Remote Control Version 1.0



732.28.435

HDE 23.06.22

1. History

Version	Date	Changes
1.0	03/2022	Initial Documentation

Table of Content

1.	History	2
2.	General Information	4
2.1	Valid for	4
2.2	Connect Mesh Box monochrome	4
2.3	Connect Mesh Remote Eco	4
3.	Getting started	5
3.1	Installation	5
3.2	Functions	6
3.2.1	Functions general	6
3.3.1	Changing Channels	6
3.3.2	Turning Groups On/Off	6
3.3.3	Changing Brightness	7
4.	Resetting	7
4.1	Reset of Connect Mesh Box Eco	7
4.2	Reset of Connect Mesh Remote Eco	8
5.	Provisioning	8
5.1	Adding Connect Mesh Boxes	8
5.2	Creation of a new network (after complete reset of all devices)	9
6.	Status LED	9
6.1	Status LED Connect Mesh Box Eco	9
6.2	Connect Mesh Remote Eco	9

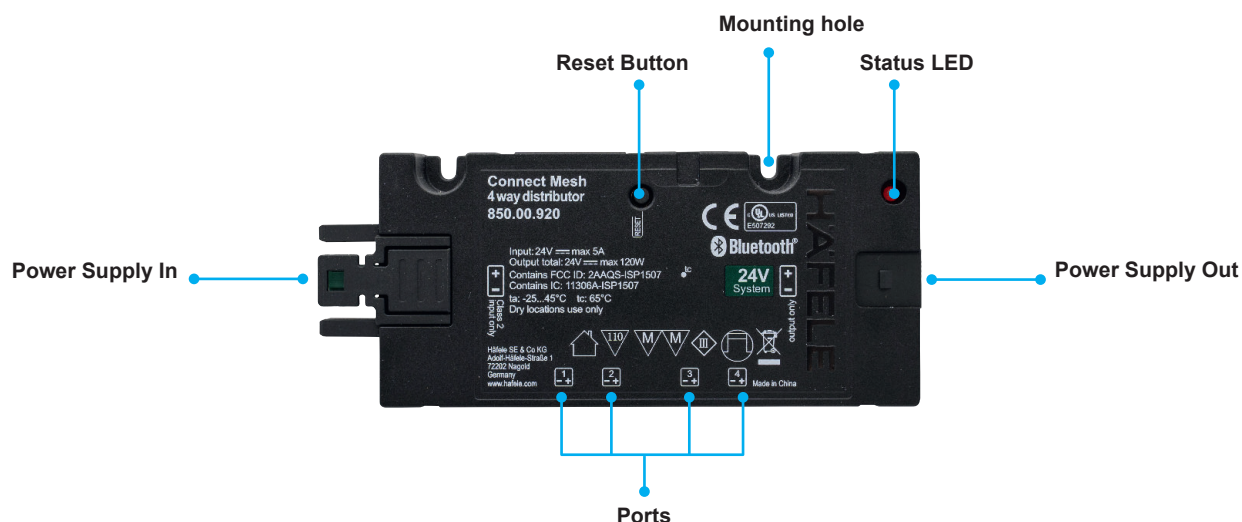
2. General Information

2.1 Valid for

	Article Number	Consists of
Set 1 – monochrome 12V	850.00.981	1 Remote Control 1 Connect Mesh Box monochrome 12 V
Set 2 – monochrome 24V	850.00.982	1 Remote Control 1 Connect Mesh Box monochrome 24 V

Your Connect Mesh Set is already paired and you can start right away.

2.2 Connect Mesh Box monochrome



[Image 1] Connect Mesh Box monochrome (example shows 24V version)

2.3 Connect Mesh Remote Eco

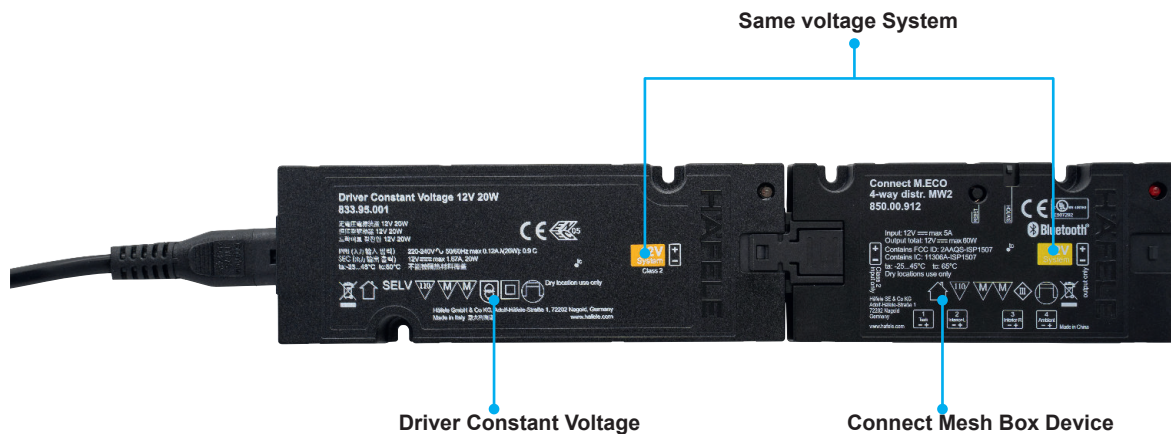


[Image 2] Connect Mesh Remote Eco

3. Getting started

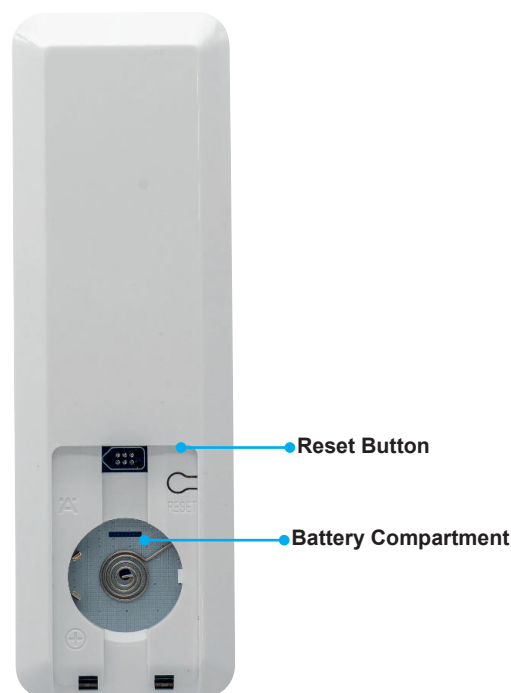
3.1 Installation

1. Power the Connect Mesh Box by plugging it into a Häfele Loox LED Driver. Make sure that the power supply unit and the box are from the same voltage system.



[Image 3] Installation Mesh Box and LED Driver (example shows 12V version)

2. Please insert a new battery to set up the Connect Mesh Remote ECO. In order to do this, open the battery compartment on the back of the device and insert a coin cell battery (CR2032). The devices are already paired so after plugging in the lights you can start.



[Image 4] Connect Mesh Remote Eco, Battery replacement

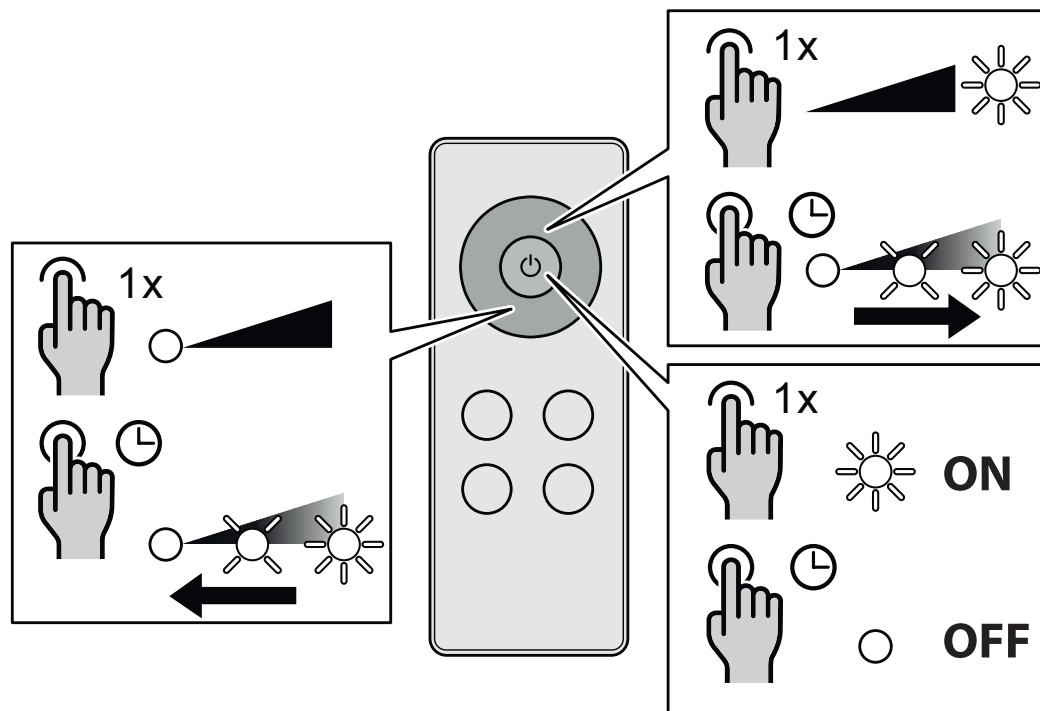
3.2 Functions

3.2.1 Functions general

- > By pressing ON/OFF all ports are controlled at the same time.
- > By pressing button 1 to 4 the selected channel turns ON. To turn this channel OFF press and hold the same button. To control the individual channels press the click wheel within 5 seconds.



[Image 5] Connect Mesh Remote Eco



[Image 6] Connect Mesh Remote Eco, Operation concept

3.3.1 Changing Channels

Every Connect Mesh Remote Eco has 5 channels (channel 0 all, channels 1-4). The integrated battery saving mode makes the device fall asleep after 5 seconds of no button press.

If the user wakes up the Remote Eco by pressing any button, the remote device will control all channels (Channel 0). Use the channel buttons 1-4 under the control wheel to change and directly turn on the active channel of your Connect Mesh Box. After you press one of the channel buttons, the status LED turns solid red. This means that one of the channels is selected and that the Remote Eco now controls the selected channel instead of the default channel. When falling asleep the active channel will be set back to your default group and the LED turns off.

3.3.2 Turning Groups On/Off

You can turn on the active channel/group by pressing the power button in the middle of the click wheel. To turn a channel/group off, press and hold the same button.

By pressing button 1 to 4 the selected channel turns on. To turn this channel off press and hold the same button.

3.3.3 Changing Brightness

You can control the brightness of devices in the same group by keeping “up” and “down” pressed on the click wheel. “Up” increases the brightness, while “down” reduces the brightness until the lights turn off completely. Releasing the press will set and lock the current state of the lights.

You can jump directly to the maximum or minimum brightness with a single click.

4. Resetting

4.1 Reset of Connect Mesh Box Eco

Press the Reset button for at least 8 seconds and release it. This will reset the Connect Mesh device. The Status LED will start blinking.



[Image 7] Connect Mesh Box Eco, Reset, (example shows 24V version)

4.2 Reset of Connect Mesh Remote Eco

Press the reset button for at least 8 seconds and release it. This will reset the Connect Mesh device. The Status LED will start blinking.



[Image 8] Connect Mesh Remote Eco, Reset

5. Provisioning

5.1 Adding Connect Mesh Boxes

For adding boxes press at Connect Mesh Remote Eco the channel buttons 3 and 4 of simultaneously for 4 seconds.



[Image 9] Connect Mesh Remote Eco, Adding Boxes

The Connect Mesh Remote Eco status LED blinks slowly to indicate the running scan for addable mesh devices. The Connect Mesh Box you would like to add to your network has to be in Provisioning Mode (Status LED blinking). After the Connect Mesh Remote Eco finds a device in provisioning mode, the status LED starts to flash faster to indicate the current steps of the provisioning process.

After the found Connect Mesh Box was added successfully (Status LED of the Connect Mesh Box constant on), the Connect Mesh remote control restarts scanning for the next device to add (status LED blinks slowly).

To finish the process, please press any button on the control wheel.

5.2 Creation of a new network (after complete reset of all devices)

Refer to the same process like “adding Connect Mesh boxes” in chapter 5.1.

6. Status LED

6.1 Status LED Connect Mesh Box Eco

The status LED is located on the top of the device.

Status LED Behaviour	Meaning
Off	The Connect Mesh Box has no power.
Repeated blinking frequency with one-second pause	The Connect Mesh Box is in provisioning mode and ready to be provisioned.
Solid Red	The Connect Mesh Box is turned on and connected to the BLE Mesh Network.
Blinking rapidly	The Connect Mesh Box is in OTA update mode and is ready to be updated. It will remain in OTA update mode for 60 seconds or until the power is interrupted.

6.2 Connect Mesh Remote Eco

The status LED is located in the upper right corner of the device and is not visible if turned off.

Status LED Behaviour	Meaning
Off	The Connect Mesh Remote Eco is either in normal operation mode or its battery is empty.
Blinking	The Connect Mesh Remote Eco is in provisioning mode and is ready to be added to an existing Connect Mesh network.
Repeated blinking frequency with one-second pause	The Connect Mesh Remote Eco has a low battery. Please change the battery soon.
Solid Red	One of the four channel/group buttons was pressed. The selected channel can now be controlled until the Remote Eco falls back asleep.
Blinking rapidly	The Connect Mesh Remote Eco is in OTA update mode and is ready to be updated. It will remain in OTA update mode for 60 seconds or until the power is interrupted.