
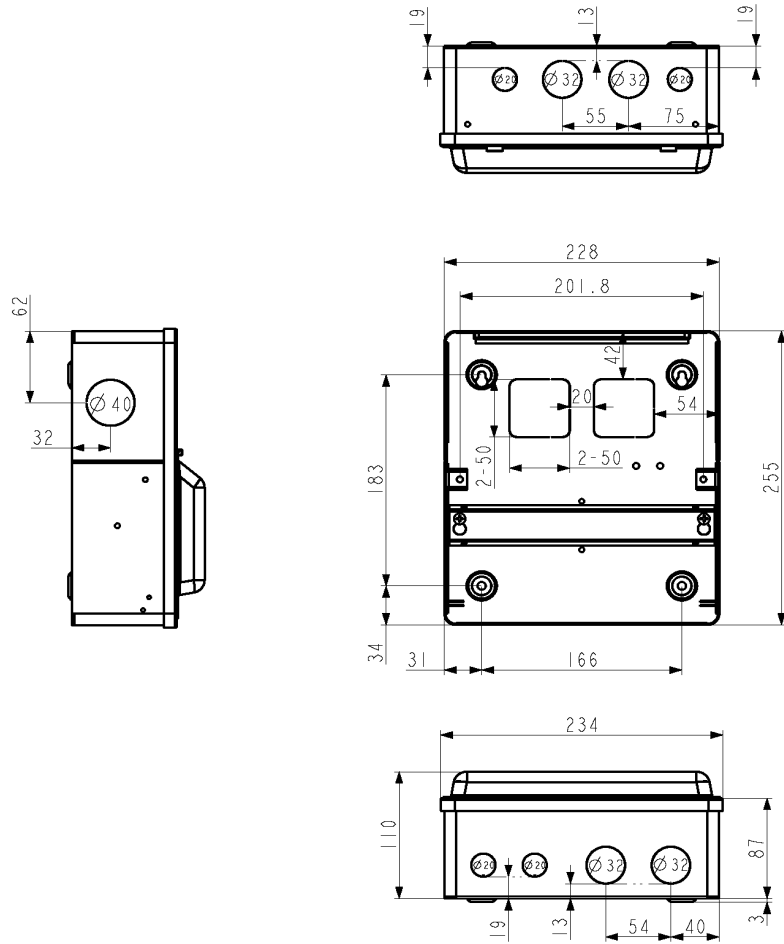


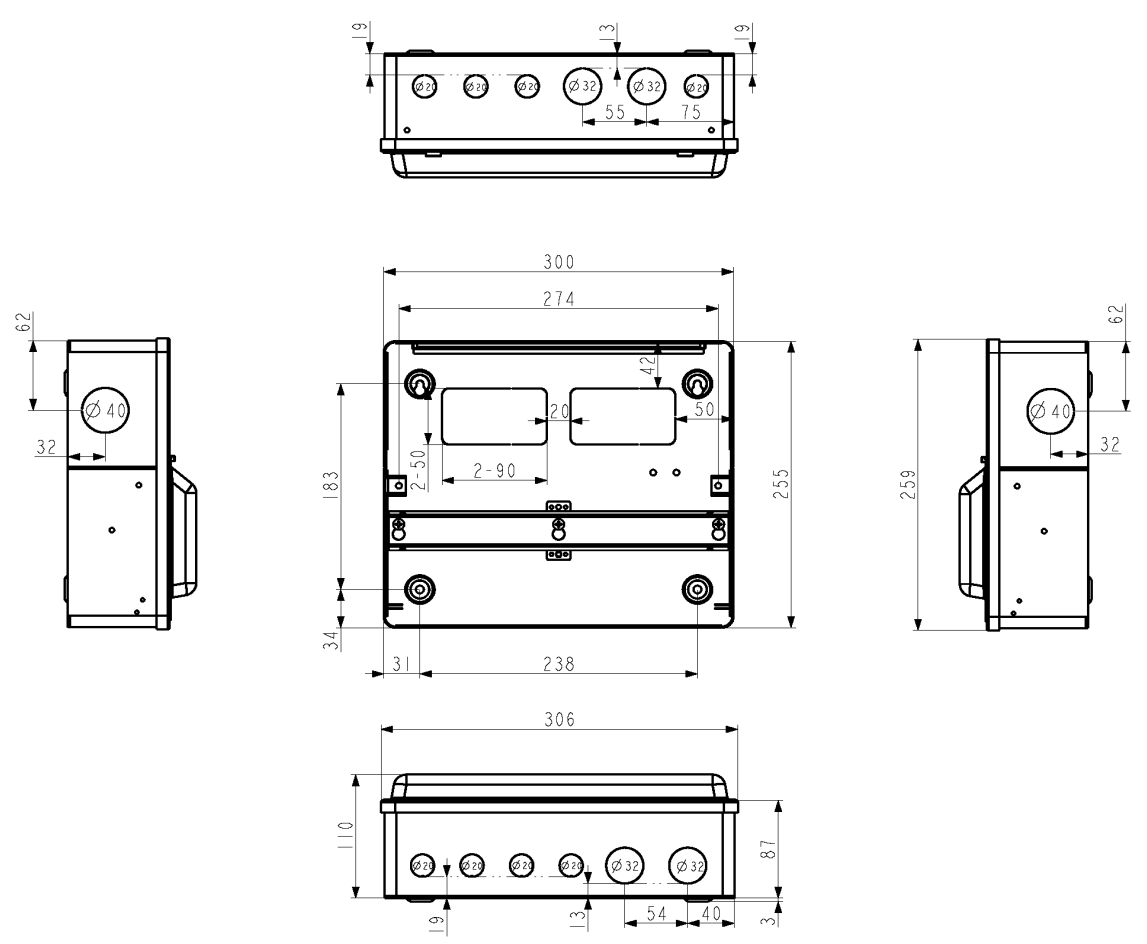
|                                     | MAIN SWITCH (100A)   |                      |                      |                      |                      |                      |                      |  |
|-------------------------------------|----------------------|----------------------|----------------------|----------------------|----------------------|----------------------|----------------------|---|
|                                     | <b>4</b>             | <b>7</b>             | <b>11</b>            | <b>15</b>            | <b>21</b>            | <b>22</b>            | <b>30</b>            |   |
| NUMBER OF USABLE WAYS               | <b>F2004M</b>        | <b>F2007M</b>        | <b>F2011M</b>        | <b>F2015M</b>        | <b>F2021M</b>        | <b>F2022M</b>        | <b>F2030M</b>        |   |
| PART NUMBER WITH T2 SPD             | <b>5060523523863</b> | <b>5060523523870</b> | <b>5060523523887</b> | <b>5060523523894</b> | <b>5060523523900</b> | <b>5060523524051</b> | <b>5060523524075</b> |   |
| GTIN-13                             |                      |                      |                      |                      |                      |                      |                      |   |
| CARTON QUANTITY                     | 8                    | 6                    | 4                    | 4                    | 4                    | 2                    | 2                    |   |
| DIMENSION DRAWING                   | 6P                   | 10P                  | 14P                  | 18P                  | 24P                  | 28P                  | 36P                  |   |
| WEIGHT (1PC) Kg                     | 2.3                  | 2.8                  | 3.2                  | 3.8                  | 4.8                  | 7.8                  | 8                    |   |
| DIMENSIONS (HxWxD)mm                | 259x162x113          | 259x234x113          | 259x306x113          | 259x378x113          | 259x486x113          | 512x306x113          | 512x378x113          |   |
| DOUBLE BANK                         | N                    | N                    | N                    | N                    | N                    | Y                    | Y                    |   |
| TAIL CLAMP COMPATIBLE (ACCF)        | Y                    | Y                    | Y                    | Y                    | Y                    | Y                    | Y                    |   |
| STANDARD                            |                      |                      |                      |                      |                      |                      |                      | EN 61439-3  |
| RATED VOLTAGE (Un/AC)               |                      |                      |                      |                      |                      |                      |                      | 230V  |
| FREQUENCY (Hz)                      |                      |                      |                      |                      |                      |                      |                      | 50/60   |
| PROTECTION DEGREE (IP)              |                      |                      |                      |                      |                      |                      |                      | 2XC   |
| MAXIMUM TERMINAL BAR CAPACITY       |                      |                      |                      |                      |                      |                      |                      | 16mm <sup>2</sup>   |
| TERMINAL BAR TIGHTENING TORQUE (Nm) |                      |                      |                      |                      |                      |                      |                      | 2.0   |
| DEVICE MOUNTING                     |                      |                      |                      |                      |                      |                      |                      | 35mm DIN RAIL   |
| MATERIAL                            |                      |                      |                      |                      |                      |                      |                      | 1mm ELECTRO GALVANISED STEEL (ZINC)   |
| FINISH                              |                      |                      |                      |                      |                      |                      |                      | RAL 9001 POWDER COATED SMOOTH FINISH  |
| KNOCKOUTS                           |                      |                      |                      |                      |                      |                      |                      | SELECTION 20mm - 40mm   |
| ACCESSORY PACK                      |                      |                      |                      |                      |                      |                      |                      | CIRCUIT IDENTIFICATION LABELS / GROMMET STRIP                                       |
| ORIGIN OF MANUFACTURE               |                      |                      |                      |                      |                      |                      |                      | CHINA   |

DIMENSIONS

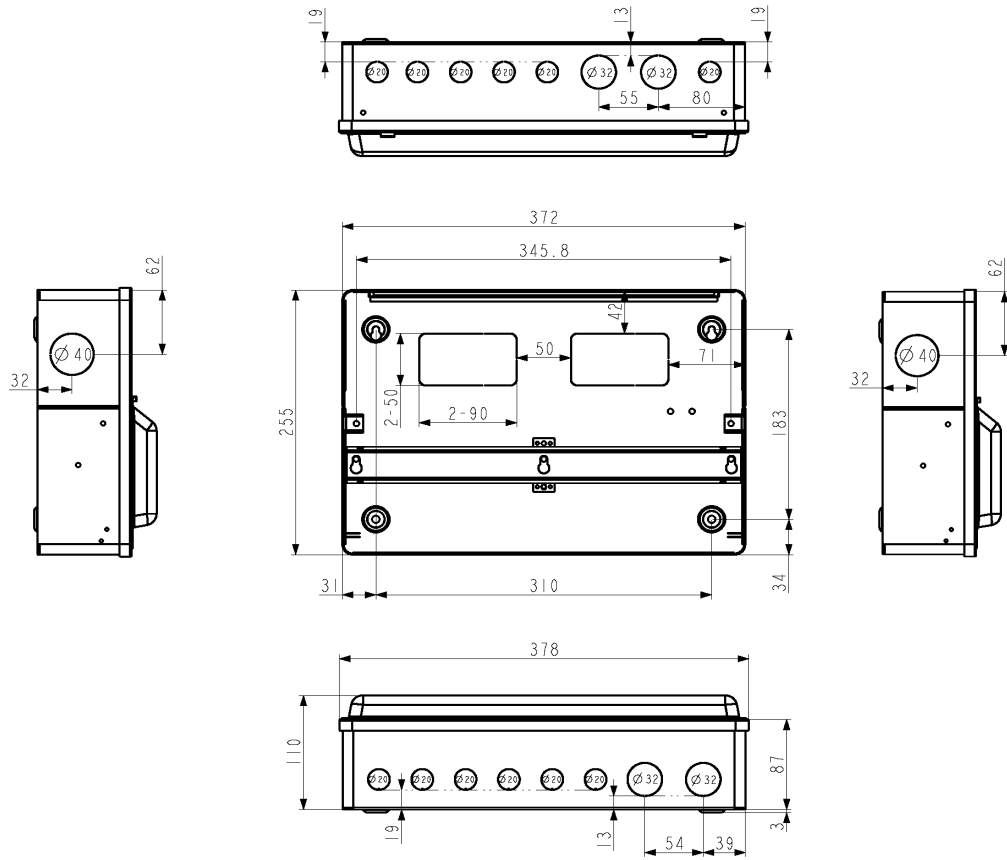
10P



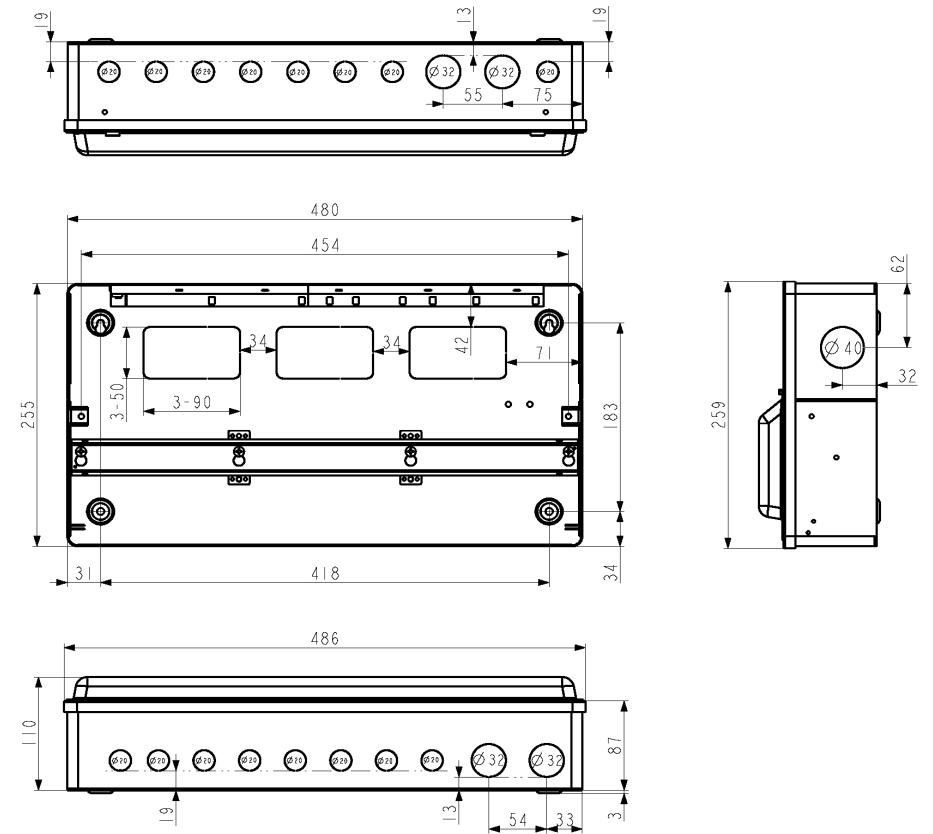
14P



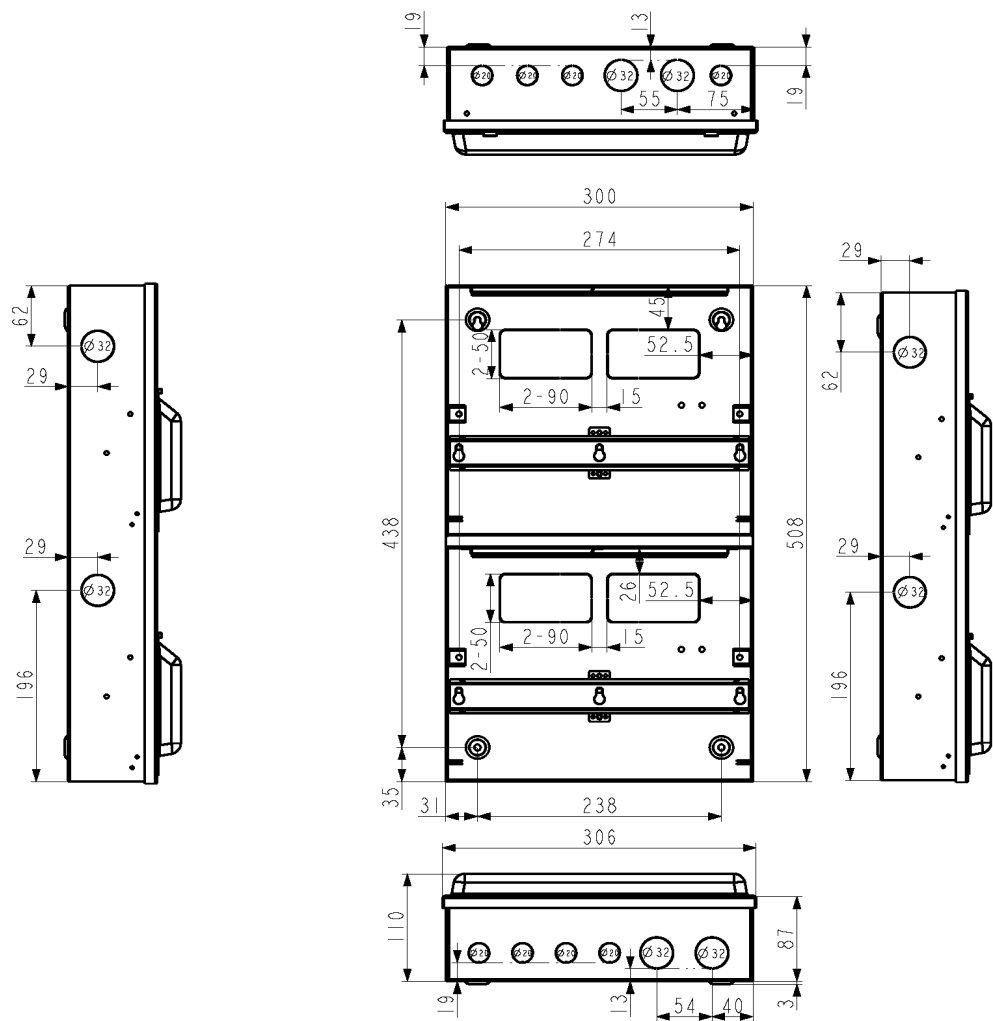
18P



24P



28P



36P

