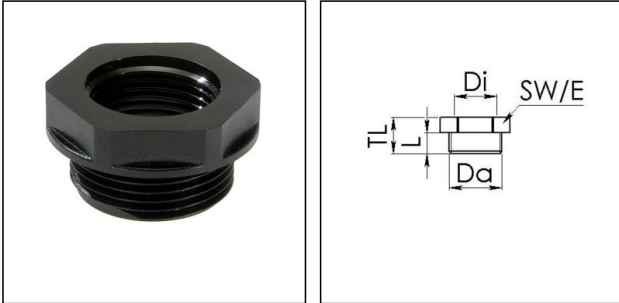


KRM 25/20 BK

Reduction adaptor, polyamide, RAL 9005, M25 / M20



Products may differ in size, colour and appearance to those shown. If you require further information or customisation, please contact us directly.



Material	Polyamide, fibre reinforced
Temp. range min	-40 °C
Temp. range max	100 °C
Glow wire test	650 °C
Thread type outer	M
Ø outer thread	25
Lead outer	1,5
Length screw-in thread L	10 mm
Thread type inner	M
Ø inner thread	20
Lead inner	1,5
Total length TL	17 mm
Key width SW	29 mm
Collar diameter (E)	32 mm
Product Color	RAL 9005
Order no. RAL 9005	10063807
Type	KRM 25/20 BK
Packing unit	100
EAN number	4007685638074
Tariff number	39269097
ETIM-Classification	EC000441

12.11.2022

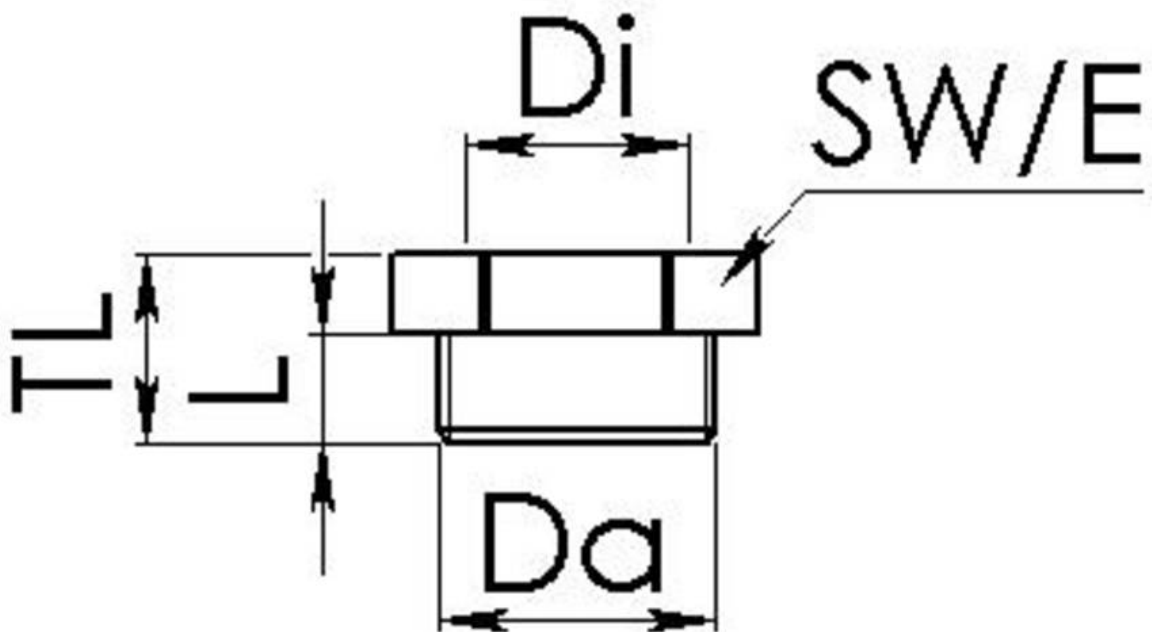
Your Contact:

WISKA Hoppmann GmbH

Kisdorfer Weg 28 · 24568 Kaltenkirchen · Germany

☎ +49-4191-508-0 · 📠 +49-4191-508-209

contact@wiska.de · www.wiska.com



Your Contact:

WISKA Hoppmann GmbH

Kisdorfer Weg 28 · 24568 Kaltenkirchen · Germany

☎ +49-4191-508-0 · 📠 +49-4191-508-209

contact@wiska.de · www.wiska.com