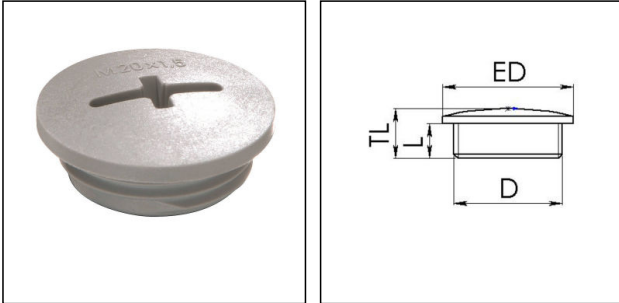


## EVSG 20 SG

Stop end, polyamide, RAL 7001, M20



Products may differ in size, colour and appearance to those shown. If you require further information or customisation, please contact us directly.



<b>Material</b>	Polyamide, fibre reinforced
<b>Temp. range min</b>	-40 °C
<b>Temp. range max</b>	100 °C
<b>Glow wire test</b>	650 °C
<b>Protection class</b>	IP56
<b>Advice</b>	with sealing IP66/IP68
<b>Thread type</b>	M
<b>Ø Connection thread D</b>	20
<b>Lead</b>	1,5
<b>Length screw-in thread L</b>	6 mm
<b>Total length TL</b>	9,5 mm
<b>External diameter ED</b>	24 mm
<b>Product Color</b>	RAL 7001
<b>Order no. RAL 7001</b>	10062516
<b>Type</b>	EVSG 20 SG
<b>Packing unit</b>	100
<b>EAN number</b>	4007685625166
<b>Tariff number</b>	39269097
<b>ETIM-Classification</b>	EC000032

### Recommended accessories

<b>EMUG 20 SG</b>	10062714
<b>EADR 20</b>	10062803

Your Contact:

WISKA Hoppmann GmbH

Kisdorfer Weg 28 · 24568 Kaltenkirchen · Germany

☎ +49-4191-508-0 · 📠 +49-4191-508-209



contact@wiska.de · www.wiska.com

12.11.2022

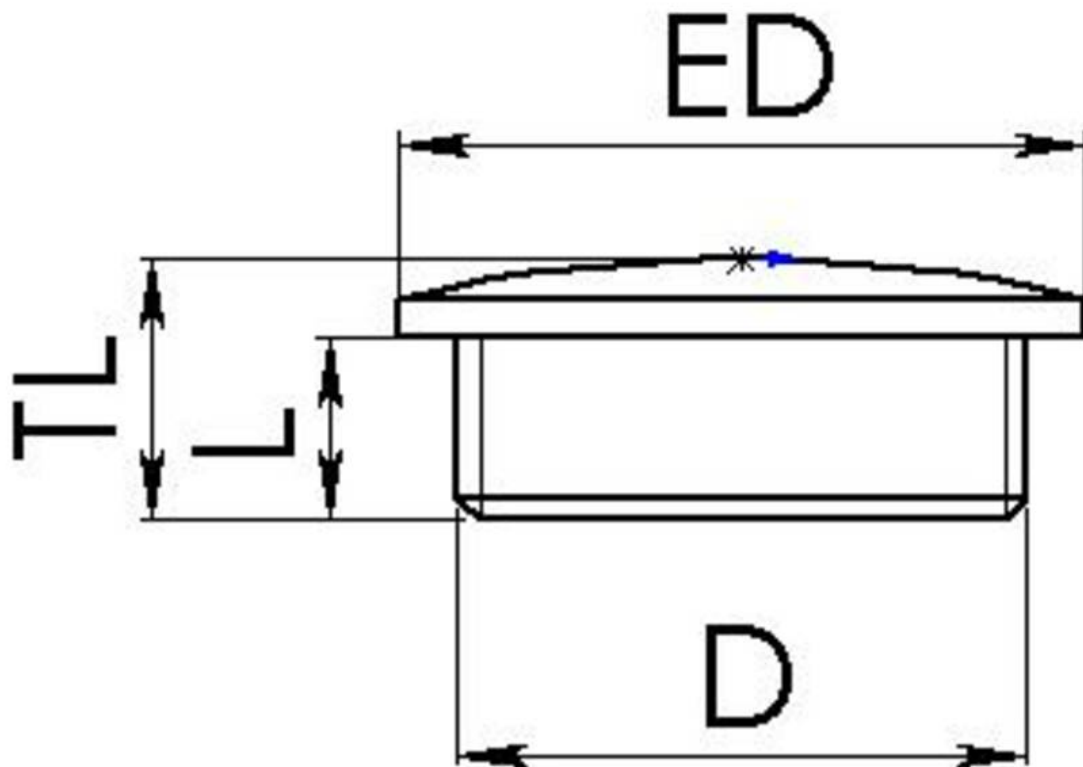
Your Contact:

**WISKA Hoppmann GmbH**

Kisdorfer Weg 28 · 24568 Kaltenkirchen · Germany

 +49-4191-508-0 ·  +49-4191-508-209

[contact@wiska.de](mailto:contact@wiska.de) · [www.wiska.com](http://www.wiska.com)



Your Contact:

**WISKA Hoppmann GmbH**

Kisdorfer Weg 28 · 24568 Kaltenkirchen · Germany

☎ +49-4191-508-0 · 📠 +49-4191-508-209

contact@wiska.de · www.wiska.com