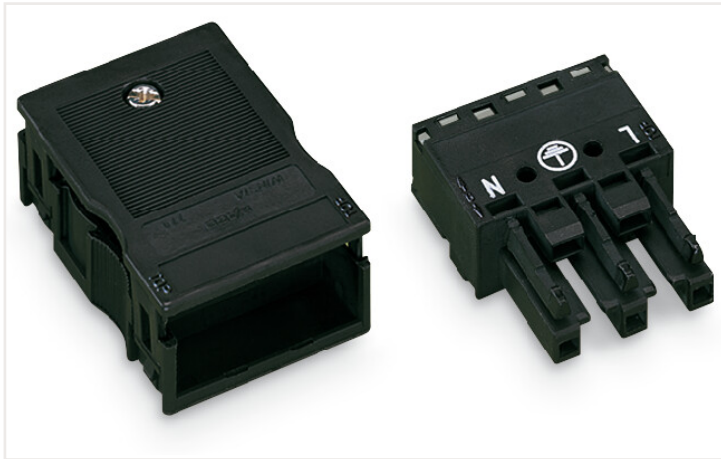


Data sheet | Item number: 770-103

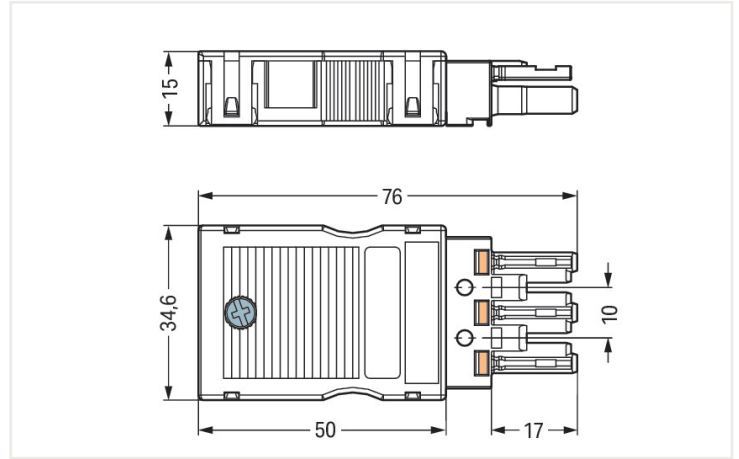
Socket; with strain relief housing; 3-pole; Cod. A; 4,00 mm²; black



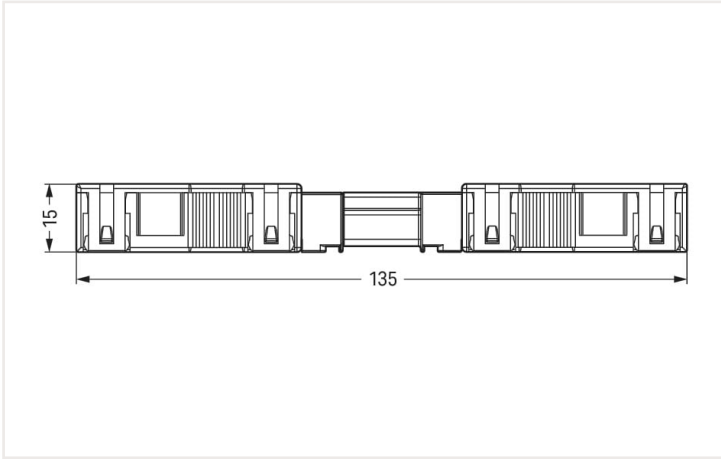
<https://www.wago.com/770-103>



Color: ■ black



Dimensions in mm



Dimensions in mm

Overall length when mated

Female connector/socket WINSTA® MIDI rated current 25 A

The WINSTA® MIDI female connector/socket with protection against mismatching is the pluggable solution for your use in control cabinets, for lighting connections or on PCBs. Whether on PCBs, in control cabinets or for connecting lights – pluggable installation connectors from WAGO allow you to establish connections according to a huge variety of requirements in next to no time. The color coding and mechanical coding of the pluggable installation connector ensure error-free installation of the individual components – including protection against mismatching. The WINSTA® MIDI pluggable installation connector with A coding in white or black is usually used for general mains applications in power distribution. Important parameters in the selection of a pluggable installation connector are the rated current and voltage: They tell us about the product's domains of use. This product has a current rating of 25 A – as a result it is also suitable for robust loads. The WINSTA® MIDI Pluggable Connection System with Push-in CAGE CLAMP® spring pressure connection technology facilitates safe electrification. Due to the integrated test slot, it is possible to check connections even when they are plugged in. This saves time, labor, and money. The strip length is 55 mm.

Lower costs through fast commissioning and elimination of service expenses – solutions from WINSTA® MIDI

WINSTA® is the pluggable connection system that is perfectly tailored to the strict requirements of electrical installation. It offers error-free installation of cables and components, quickly and reliably. Take advantage of the pluggable version of our maintenance-free spring pressure connection technology too! Plan your installation with WINSTA® MIDI pluggable installation connectors with strain relief hosting from WAGO.

- protection against mismatching eliminates errors
- for automation controllers
- with A coding for a great number of applications
- flexible installation to save space
- quick replacement of defective units during ongoing operation

Item includes



Item no.: 770-503

1

Strain relief housing; 3-pole; for 2 cables;
8.0 ... 11.5 mm; 55 mm; black

Item no.: 770-203

1

Socket; 3-pole; Cod. A; 4,00 mm²; black

Electrical data

Ratings per IEC/EN

Ratings per	IEC/EN 60664-1
Nominal voltage (III/3)	250 V
Rated impulse voltage (III/3)	4 kV
Rated current	25 A
Legend (ratings)	(III / 3) \triangleq Overvoltage category III / Pollution degree 3

Ratings per UL

Note for the US market	Some versions may also be used for current interruption in accordance with the UL certificate in select applications with currents below 16 A and voltages up to 600 V. For further information, please contact your local sales office.
Rated voltage (UL 1977)	600 V
Rated current UL 1977	23 A

General

Note on contact resistance	approx. 1 m Ω of contact resistance approx. 0.25 m Ω contact transition plug/ socket
----------------------------	--

Connection data

Connection points	6
Total number of potentials	3
Number of test slots	3

Connection 1

Connection technology	Push-in CAGE CLAMP®
Actuation type	Operating tool Push-in
Nominal cross-section	4 mm ² / 12 AWG
Solid conductor	0.5 ... 4 mm ² / 20 ... 12 AWG
Solid conductor; push-in termination	1.5 ... 4 mm ² / 16 ... 12 AWG
Stranded conductor	0.5 ... 2.5 mm ² / 20 ... 14 AWG
Fine-stranded conductor	0.5 ... 4 mm ² / 20 ... 12 AWG
Fine-stranded conductor; with insulated ferrule	0.25 ... 1.5 mm ² / 20 ... 16 AWG
Fine-stranded conductor; with uninsulated ferrule	0.25 ... 2.5 mm ² / 20 ... 14 AWG
Fine-stranded conductor; with ferrule; push-in termination	1.5 mm ² / 16 AWG
Strip length	9 mm / 0.35 inches
Pole number	3
Connectable sheathed cable diameter	8 ... 11.5 mm
Conductor entry direction to mating direction	0°
Strip length (outer insulation)	55 mm

Physical data

Pin spacing	10 mm / 0.394 inches
Width	34.6 mm / 1.362 inches
Height	15 mm / 0.591 inches
Depth	75.9 mm / 2.988 inches

Mechanical Data

Application	General mains applications
Coding	A
Variable coding	Yes
Marking	L ⊕ N
Potential marking	L ⊕ N
Mating force of a plug-in connection	approx. 20 ... 70 N (depending on pole number)
Retention force of a plug-in connection	Locked:
Unmating force of a plug-in connection	Unlocked: approx. 20 ... 70 N (depending on pole number)
Number of mating cycles	200, without resistive load
Protection type	IP2XC; When mated and secured with a strain relief housing: IP2xC (These compact connectors are not designed for use in open, easily accessible areas!)

Plug-in connection

Contact type (pluggable connector)	Female connector/socket
Connector (connection type)	for conductor
Mismating protection	Yes
Note on mismating protection	All WINSTA® components are 100% protected against mismating when: a.) plugging different numbers of poles b.) plugging while rotated 180 c.) plugging while laterally staggered d.) plugging one pole
Locking lever	Can be retrofitted
Locking of plug-in connection	Locking lever
Note on locking system	All connectors for mounted installations (snap-in versions for lighting fixtures or devices, all types of PCB and distribution connectors) are factory-equipped with locking levers to ensure plugs and sockets are securely locked. Additional locking levers are only required for flying leads (plug/socket).
Strain relief	Strain relief housing

Material Data

Note (material data)	Information on material data can be found here
Color	black
Cover color	gray
Material group	III/3
Insulation material	Polyamide (PA66)
Flammability class per UL94	V0
Clamping spring material	Chrome-nickel spring steel (CrNi)
Contact material	Copper or copper alloy; surface-treated
Contact plating	Tin
Fire load	0.414 MJ
Strain relief color	black
Weight	20 g

Environmental requirements

Processing temperature	-5 ... +40 °C
Continuous operating temperature	-35 ... +85 °C
Note on continuous operating temperature	Insulating parts for temperatures ≤ 105 °C

1 Compatible products

1.1 System counterpart

1.1.1 Cable assembly



Item no.: 771-9993/206-101
pre-assembled connecting cable; Eca; Plug/open-ended; 3-pole; Cod. A; H05VV-F 3G 1.5 mm²; 1 m; 1,50 mm²; black



Item no.: 771-9993/006-101
pre-assembled interconnecting cable; Eca; Socket/plug; 3-pole; Cod. A; H05VV-F 3G 1.5 mm²; 1 m; 1,50 mm²; black

1.1.2 Distribution box



Item no.: 899-631/181-000
Distribution box; 230 V + DALI; 2 inputs; 6 outputs; Cod. A, I; MINI, MIDI; black



Item no.: 899-631/405-000
Distribution box; 230 V + SMI; 2 inputs; 6 outputs; Cod. A, B; MINI, MIDI; black



Item no.: 899-631/315-000
Distribution box; Cable and device protection; 1 input; 4 outputs; Cod. A; MIDI; black



Item no.: 899-631/305-000
Distribution box; Crossover switching; 1 input; 5 outputs; Cod. A, B, S; MIDI; black



Item no.: 899-631/309-000
Distribution box; Motion/presence detector; 1 input; 3 outputs; Cod. A, S; MIDI; black



Item no.: 899-631/180-000
Distribution box; Motion/presence detector; 1 input; 5 outputs; Cod. A; MIDI; black



Item no.: 899-632/102-000
Distribution box; Relay switching; 2 inputs; 1 output; Cod. A, B; MINI, MIDI



Item no.: 899-631/386-000
Distribution box; Series switching; 1 input; 7 outputs; Cod. A, S; MIDI; black



Item no.: 899-631/477-000
Distribution box; Single-phase current (230 V); 1 input; 11 outputs; Cod. A; MIDI



Item no.: 899-631/334-000
Distribution box; Single-phase current (230 V); 1 input; 13 outputs; Cod. A; MIDI; black



Item no.: 899-631/476-000
Distribution box; Single-phase current (230 V); 1 input; 4 outputs; Cod. A; MIDI



Item no.: 899-631/104-000
Distribution box; Single-phase current (230 V); 1 input; 7 outputs; Cod. A; MIDI; black



Item no.: 899-631/311-000
Distribution box; Single-phase current (230 V); 2 inputs; 6 outputs; Cod. A, P; MIDI; black



Item no.: 899-631/327-000
Distribution box; Single-phase current (230 V); 2 inputs; 6 outputs; Cod. A; MIDI; black



Item no.: 899-631/363-000
Distribution box; Single-pole switch circuit; 1 input; 5 outputs; Cod. A, S; MIDI; black



Item no.: 899-631/478-000
Distribution box; Single-pole switch circuit; 1 input; 7 outputs; Cod. A, S; MIDI



Item no.: 899-632/101-000
Distribution box; Surge switch circuit; 1 input; 4 outputs; Cod. A, S; MIDI; black



Item no.: 899-632/138-000
Distribution box; Surge switch circuit; 1 input; 4 outputs; Cod. A, S; MIDI; black



Item no.: 899-632/103-000
Distribution box; Surge switch circuit; 2 inputs; 2 outputs; Cod. A; MIDI



Item no.: 899-631/308-000
Distribution box; Two-way circuit; 1 input; 5 outputs; Cod. A, S; MIDI; black



Item no.: 899-631/189-000
Distribution box; Two-way circuit; 1 input; 7 outputs; Cod. A, S; MIDI; black

1.1.3 Distribution connector



Item no.: 770-607

3-way distribution connector; 3-pole; Cod. A; 1 input; 3 outputs; black



Item no.: 770-608

5-way distribution connector; 3-pole; Cod. A; 1 input; 5 outputs; outputs on both sides; black



Item no.: 770-638

Distribution connector for switches; Single-pole and throttle two-way circuit; 3-pole; Cod. A/S; 1 input; 5 outputs; black



Item no.: 770-637

Distribution connector for switches; Single-pole switch and series circuit; 3-pole; Cod. A/S; 1 input; 5 outputs; black



Item no.: 770-633

h-distribution connector; 3-pole; Cod. A; 1 input; 2 outputs; 2 locking levers; black



Item no.: 770-635

h-distribution connector; 3-pole; Cod. A; 1 input; 2 outputs; outputs on both sides; 3 locking levers; for flying leads; black



Item no.: 770-634

h-distribution connector; 3-pole; Cod. A; 1 input; 2 outputs; outputs on one side; 2 locking levers; black



Item no.: 770-636

h-distribution connector; 3-pole; Cod. A; 1 input; 2 outputs; outputs on one side; 3 locking levers; for flying leads; black



Item no.: 770-606

T-distribution connector; 3-pole; Cod. A; 1 input; 2 outputs; 2 locking levers; black



Item no.: 770-615

T-distribution connector; 3-pole; Cod. A; 1 input; 2 outputs; 3 locking levers; for flying leads; black

1.1.4 Male connector/plug



Item no.: 770-813/011-000

Plug for PCBs; angled; 3-pole; Cod. A; black



Item no.: 770-813

Plug for PCBs; straight; 3-pole; Cod. A; black



Item no.: 770-213

Plug; 3-pole; 4,00 mm²; black



Item no.: 770-213/002-000

Plug; with direct ground contact; 3-pole; 4,00 mm²; black



Item no.: 770-213/035-000

Plug; with strain relief housing; 3-pole; 4,00 mm²; black



Item no.: 770-113

Plug; with strain relief housing; 3-pole; Cod. A; 4,00 mm²; black



Item no.: 770-713

Snap-in plug; 3-pole; Cod. A; 4,00 mm²; black



Item no.: 770-713/007-000

Snap-in plug; with direct ground contact; 3-pole; Cod. A; 4,00 mm²; black

1.2 Required accessories

1.2.1 Locking system

1.2.1.1 Locking system



Item no.: 770-101

Locking lever; for flying leads; for manual operation; black



Item no.: 770-121

Locking lever; for flying leads; for manual operation; white



Item no.: 770-111

Locking lever; for flying leads; for tool operation; black



Item no.: 770-131

Locking lever; for flying leads; for tool operation; white