

THE MXQs "ONE CLICK" HOLE SAW SYSTEM

Experience the future in arbor systems:
better, faster and more efficient than all other
existing arbors in the market.

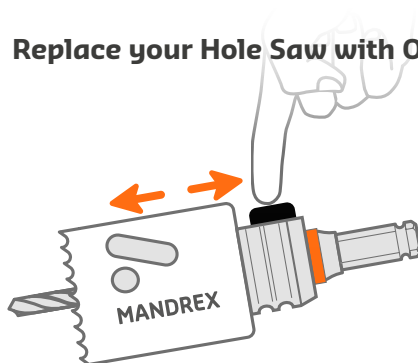
ONE
CLICK




MXqs



Replace your Hole Saw with ONE CLICK



To remove the Hole Saw to use another
diameter, just push the button and
exchange the Hole Saw. Slide on another
Hole Saw and you are ready to go.



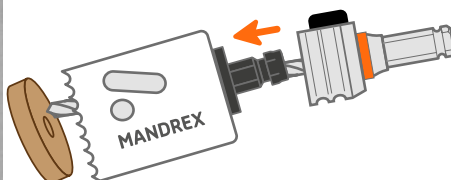
Enlarge previously drilled holes



Simple! You can now use the smaller Hole
Saw to center the drill. It is easy to drill
a hole with the desired diameter. Extra
adapter needed.



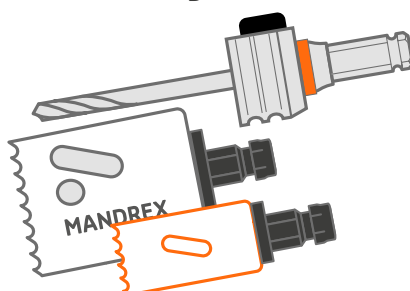
Eject the plug with ONE CLICK



Just push the button, move the Hole Saw
back and forth and you have released the
core! Drill the next hole easily and quickly,
without struggling or waiting.



1 Arbor for large and small Hole Saws



Only one arbor needed for all Hole Saw
diameters. No further need to have 2
arbors for large and small diameters.

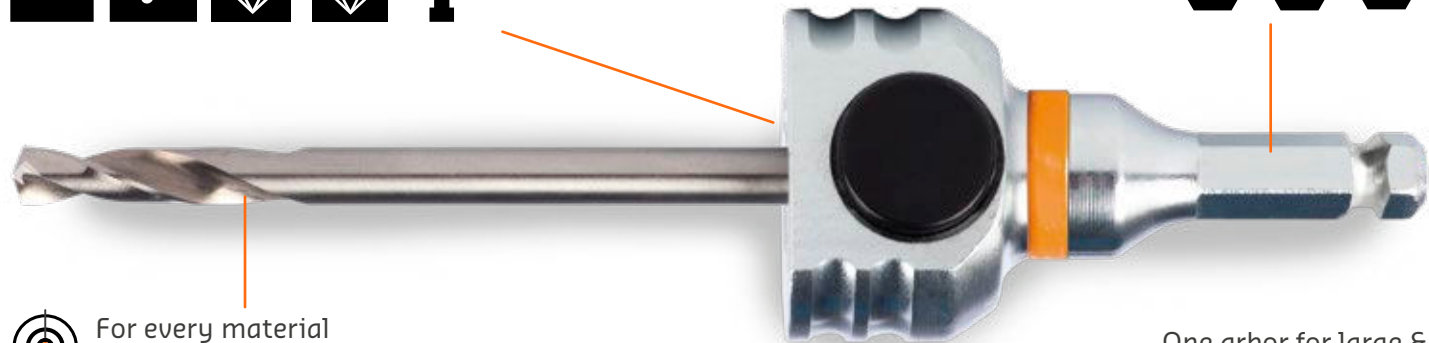
replace and mount every
Hole Saw with ONE CLICK



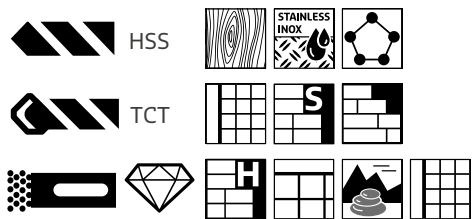
ONE
CLICK

For all drilling machines

SDS+ 8,5 11 P



For every material
there is a suitable pilot drill



One arbor for large &
small diameter Hole Saws

Ø14-210mm



Exchanging Hole Saws is a matter of pushing the button and sliding. With the MXqs arbors you only require one arbor for large and small Hole Saws. With our unique ONE CLICK arbor system it only takes seconds. Making use of the unique Mandrex MXqs arbor system brings you all its unique features with one simple CLICK.

Just push the button and start saving time, money and frustration!

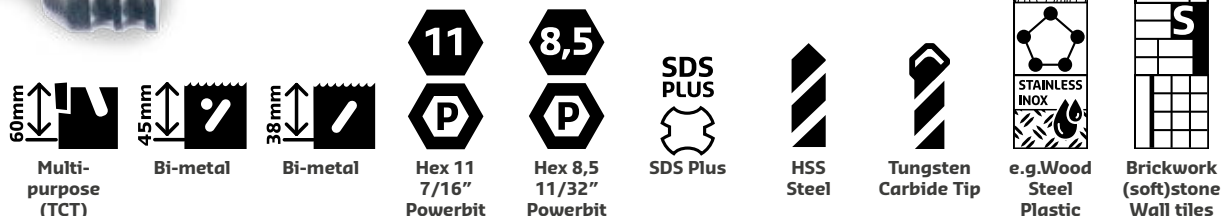


The patented MandreX MXqs "ONE Click" system is licensed to Mandrex Hole Saw System in the Netherlands for distribution worldwide

MXqs ARBORS



The MXqs arbors can be used on all drilling machines, in combination with all Hole Saws. Just choose the correct combination of arbor and pilot drill and start drilling!



Arbor Part No.	Can be used with this Hole Saw		Machine chuck size			Pilot drill		Material to drill	
MX200020B	●	●	●			●		●	
MX200021B	●		●				●		●
MX200022B			●			●		●	
MX200024B	●	●		●		●		●	
MX200025B	●			●			●		●
MX200026B			●	●		●		●	
MX200020SB	●	●			●	●		●	
MX200021SB	●				●		●		●
MX200022SB			●		●	●		●	



MX200020B

MXqs Arbor Complete for Multi-purpose Carbide Tipped, M3 & M42 HSS Bi-metal Hole Saws With HSS Pilot drill L=125mm Ø6,35mm

Drill Chuck Hex 11 - 7/16"PB.
E.g. for wood, plastics, steel, stainless

With pilot drill
MX2P0063B
L=125mm



MX200021B

MXqs Arbor Complete for Multi-purpose Carbide Tipped Hole Saws. With Carbide tipped Percussion pilot drill L=125mm Ø7mm

Drill Chuck Hex 11 - 7/16"PB.
E.g. for concrete, sandstone, brickwork, soft tiles

With pilot drill
MX2P0062B
L=125mm



MX200022B

MXqs Arbor Complete for SHORT Bi-metal Hole Saws. With short HSS Pilot drill L=105mm Ø6,35mm

Drill Chuck Hex 11 - 7/16"PB.
E.g. for wood, plastics, steel, stainless

With pilot drill
MX2P0064B
L=105mm



MX200024B

MXqs Arbor Complete for Multi-purpose Carbide Tipped, M3 & M42 HSS Bi-metal Hole Saws (long) With HSS Pilot drill L=125mm Ø6,35mm

Drill Chuck Hex 8,5 - 11/32"PB.
E.g. for wood, plastics, steel, stainless

With pilot drill
MX2P0063B
L=125mm



MX200025B

MXqs Arbor Complete for Multi-purpose Carbide Tipped Hole Saws. With Carbide tipped Percussion pilot drill L=125mm Ø7mm

Drill Chuck Hex 8,5 - 11/32"PB.
E.g. for concrete, sandstone brickwork, soft tiles

With pilot drill
MX2P0062B
L=125mm



MX200026B

MXqs Arbor Complete for SHORT Bi-metal Hole Saws. With short HSS Pilot drill L=105mm Ø6,35mm

Drill Chuck Hex 8,5 - 11/32"PB.
E.g. for wood, plastics, steel, stainless

With pilot drill
MX2P0064B
L=105mm



MX200020SB

MXqs Arbor SDS-PLUS Complete for Multi-purpose Carbide Tipped, M3 & M42 HSS Bi-metal Hole Saws (long) - With HSS Pilot drill L=125mm Ø6,35mm

Drill Chuck SDS-plus
E.g. for wood, plastics, steel, stainless

With pilot drill
MX2P0063B
L=125mm



MX200021SB

MXqs Arbor SDS-plus Complete for Multi-purpose Carbide tipped Hole Saws. With Carbide tipped Percussion pilot drill L=125mm Ø7mm

Drill Chuck SDS-plus
E.g. for concrete, sandstone brickwork, soft tiles

With pilot drill
MX2P0062B
L=125mm



MX200022SB

MXqs Arbor SDS-PLUS Complete for SHORT Bi-metal Hole Saws. With short HSS Pilot drill L=105mm Ø6,35mm

Drill Chuck SDS-plus
E.g. for wood, plastics, steel, stainless

With pilot drill
MX2P0064B
L=105mm

MXqs PILOT DRILLS



HSS Steel



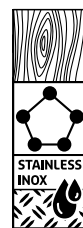
Tungsten Carbide Tip



TCT Multi-purpose



Bi-metal



e.g. Wood, Steel, Plastic



Brickwork (soft) stone, Wall tiles



Steel, Stainless 1000N/mm2

Pilot drill Part No.	Pilot drill type		Can be used with this Hole Saw			Material to drill		
MX2P0062B								
MX2P0063B								
MX2P0064B								
MX2P0068B								

MX2P0062B



Pilot drill with Tungsten carbide percussion drill tip (TCT) - L=125mm Ø7mm

E.g. for concrete, (sand-)stone, brickwork, tiles

MX2P0063B



Pilot drill HSS M2 with 135 degrees split point for smooth drilling - L=125mm Ø6,35mm

E.g. for wood, plastics, (stainless)steel

MX2P0064B



Pilot drill HSS - Short - L=105mm Ø6,35mm

E.g. for wood, plastics, (stainless)steel

MX2P0068B



Pilot drill HSS-Co with 8% Cobalt and 135 degrees split point for smooth drilling L=125mm Ø6,35mm

E.g. for Stainless/Inox, (cast-)iron, steel with tensile strength till 1000N/mm2

MXqs ADAPTERS



Bi-metal or Multi-purpose Diameter Hole Saw

Adapter Part No.	Pieces per pack	Bi-metal or Multi-purpose Diameter Hole Saw			Nm
Qty.		Ø14-30	Ø32-150	Ø152-210	High Torque
MX2P0053B	3				
MX2P0052B	3				
MX2P0052HB	3				



MX2P0053B

MXqs ONE CLICK adapter for all types of Bi-metal and Multi-purpose Hole Saws

1/2"-20UNF thread for Hole Saw diameters Ø14-30mm



MX2P0052B

MXqs ONE CLICK adapter for all types of Bi-metal and Multi-purpose Hole Saws

5/8"-18UNF thread for Hole Saw diameters Ø32-150mm



MX2P0052HB

MXqs High Torque ONE CLICK adapter for all types of Bi-metal and Multi-purpose Hole Saws, including screws

For Hole Saw diameters Ø152-210mm

MXqs HOLE ENLARGEMENT



MX2P0052HEB

Set with 3 adapters to enlarge the previously drilled hole.

- 1 adapter for using Hole Saws with 1/2" thread
- 1 adapter for using Hole Saws 1/2" and 5/8" thread
- 1 adapter for using Hole Saws with 5/8" thread

