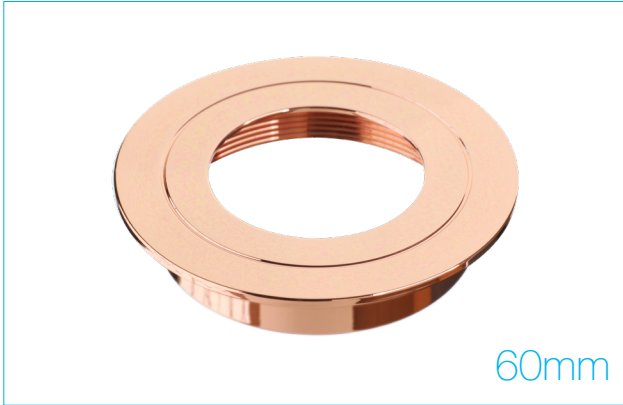


## TECHNICAL DATASHEET

### AGL060BZ/COP\*

Polished Copper Bezel for AGL060\*\*



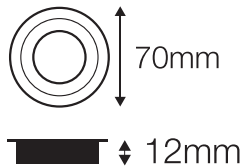
#### PRODUCT FEATURES

- Available in a Range of Finishes\*
- Threaded Design
- Easy-Fit Screw on/off Accessory

#### DRIVER COMPATIBILITY\*\*

Code	Output	Dim
ADRCC350/1-10	1 x 7W LED	No
ADRCC350TD/4-9	1 x 7W LED	Yes
ADRCC350TD/9-18	2 x 7W LED	Yes
ADRCC350TD/14-35	3-5 x 7W LED	Yes

#### DIMENSIONS



Overall:  $\varnothing$ 70mm  
Depth: 12mm

#### COMPATIBILITY TABLE

Code	Power	Lumens	Colour
AGL060AL/30	$\leq$ 410 lm	3000K	3000K
AGL060AL/40	$\leq$ 440 lm	4000K	4000K

PRODUCT CODE	AGL060BZ/COP*
Bezel Finish	Polished Copper
For use with	AGL060 Range*
Material	Aluminium

\* Indoor & Bathroom use only

\*\* Item(s) Sold Separately