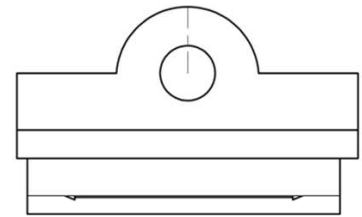
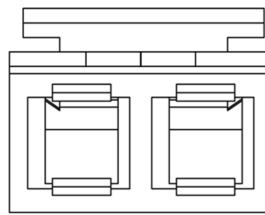
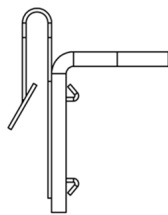
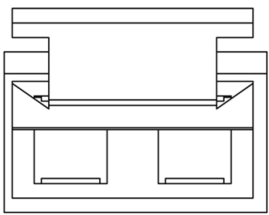
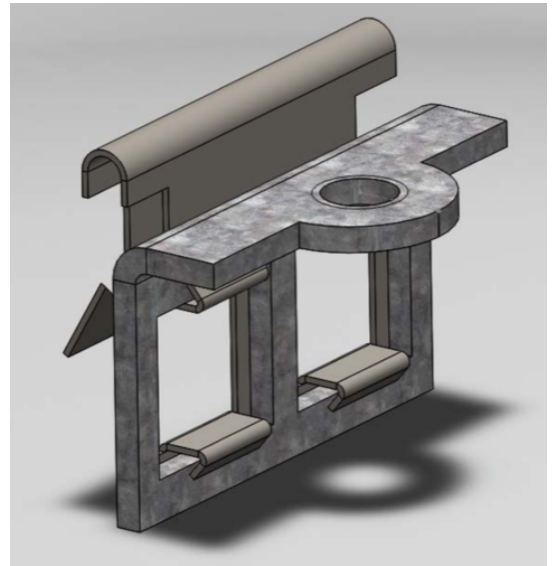


BACK BOX REPAIR CLIP

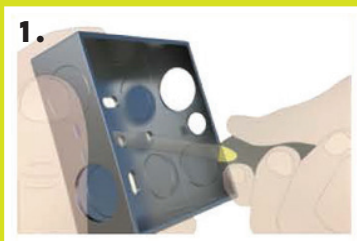


Back box repair clip has been designed as an advanced mechanism used to further optimise UK metal back boxes and prolong their performance, if the lugs are damaged.

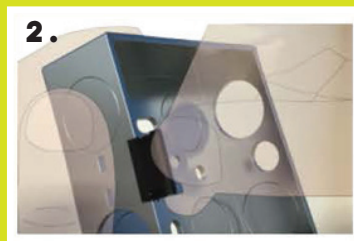
A unique push together 2 piece clip system, overall dimensions 18mm x 8mm, 0.25mm. Comprising a sprung, calibrated and tensioned steel plate against a 1mm galvanised metal M3.5 thread, clips securely to a back box with room for face plate adjustment.

An innovative: - Time, labour and cost saving, solution for every electrical back box repair.

Apply pressure and push to secure, by hand or with pliers. Do not strike or use hammers, as this will compromise and damage the component.



1.
REMOVE THE DAMAGED
THREAD



2.
PUSH THE CLIP ONTO THE
EDGE OF THE BACK BOX



3.
MOUNT THE FASCIA INTO
PLACE