



syncbox

THE WORLDS' ONLY
Universally Adaptable, Invisible Wiring System

WHAT IS SYNCBOX?

Need your TV flush to the wall? Use Syncbox behind your TV to hide & recess all power and AV connections to the screen, for a perfect install.



Fully recessed & hidden double socket. Perfect for hiding bulky plugs behind close mounted equipment.

Syncbox has been specifically designed to replace all AV outlets in the home. The clever box is effectively installed inside the wall and is supplied with a beautiful cover leaving the connections and cables completely invisible.

Syncbox is a unique system which can be configured to any specification for your home's technical automation including TV, Media, Audio or Power requirements. Syncbox has been specifically designed to populate power and audio/visual modules which enables the system to be configured to any system world-wide! Not sure what modules you require or have a large project which requires help? No problem, we offer a free technical service to help you populate Syncbox for your exact requirement.

Syncbox contains the four key elements of any audio & visual installation:

+ POWER + TV + MEDIA + AUDIO



Sky, Virgin, TV, Telephone & Data all connecting to one unit, all hidden and safe behind the cover.



The perfect partner for all integrated speaker setups. Connects a speaker system to the amplifier.



Hybrid Installation Box

The Syncbox hybrid installation box has been designed and patented to be used in both solid walls and plasterboard walls. This is the only type of installation box in the world!

For plasterboard walls, the clever design works on a ratchet clamping system. Simply cut the hole in the desired position, insert the cables into the box, locate the box into the wall and pull the straps to tighten – simple! Should your install be in a solid wall, simply discard the straps and fix the box into position exactly the same way a conventional metal box would be installed.



You can view a full installation video via the Syncbox website:
www.sync-box.com

Vital stats

- + 137mm Wide, 77mm High, 78mm Deep
- + 20mm Cable Entries
- + Oval Media Cable Entries 41mm x 18mm
- + Oval Power Cable Entries 25mm x 12mm
- + Material ABS FR
- + Rubber grommets for cable entry make the box an 90% closed unit

Frame & Cover

Syncbox has been designed as a fully modular system. Therefore, any configuration is completely adaptable to the individual's TV/AV requirement. Using Euro modules and Keystone Modules it is possible to populate Syncbox with up to 8 x AV connections in one unit! With the cover in location the Syncbox has a 10mm profile which enables a flat screen TV to be mounted flush to any wall. Covers are also available in various metal finishes.

Vital stats

Cover

- + 155mm Wide, 95mm High, 10mm Deep
- + Slides from top to bottom over the frame
- + Standard cover is white. Also available in various metal finishes
- + Guarantees Tidy & Protected Cabling

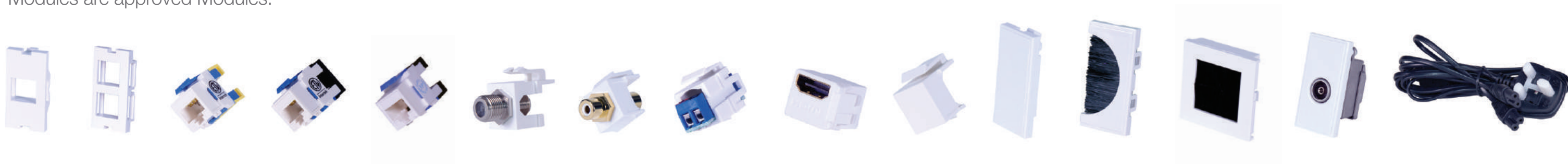
Frame

- + 100mm x 50mm access for modules
- + Overall internal recess depth of 45mm
- + Houses up to 8 x AV Keystone Modules

A CLOSER LOOK

Modules

Keystone Modules are 25mm x 25mm and available world-wide. Modules house neatly into the Keystone Frames which in turn clip easily into the Syncbox frame. All Syncbox Modules are approved Modules.





1

2



3

Power, Audio/Visual or both! Syncbox brilliantly combines power and AV connections into 1 x double socket space. The possibilities are endless.



4



5



6



Preloaded Syncbox

Syncbox accommodates Euro Modules and Keystone Modules making it the most versatile TV/AV point in the world. Power modules and audio visual modules are available for any country world-wide. With over 1m configurations possible it is easy to get overwhelmed when choosing the correct specification. Not to worry, we have pre-populated packs available which are specifically designed to accommodate set systems.

ENDLESS POSSIBILITIES

1 Syncbox Pro

A Syncbox Professional is ideal for the simple installation of a professional TV point. Incorporating the power module only, leaving you to add AV modules of your choice. Up to 4 AV modules can be added to achieve the perfect TV point.

2 Syncbox Power

Syncbox Power provides two 13 amp angled power sockets alongside each-other, creating a recessed double socket.

3 Syncbox Direct

Syncbox Direct features a 13 amp socket alongside a 50mm brush plate. A Syncbox Direct is an ideal in-wall TV point for homeowners who want a simple and easy solution to keeping the cables looking clean & tidy wherever cables pass through walls.

4 Syncbox Smart

A Syncbox Smart is ideal for the simple installation of a professional TV point. With an F type module used for satellite and cable signal in addition to a cat6 module used for carrying audio and visual signals to create a perfect home theatre system.

5 Syncbox Media

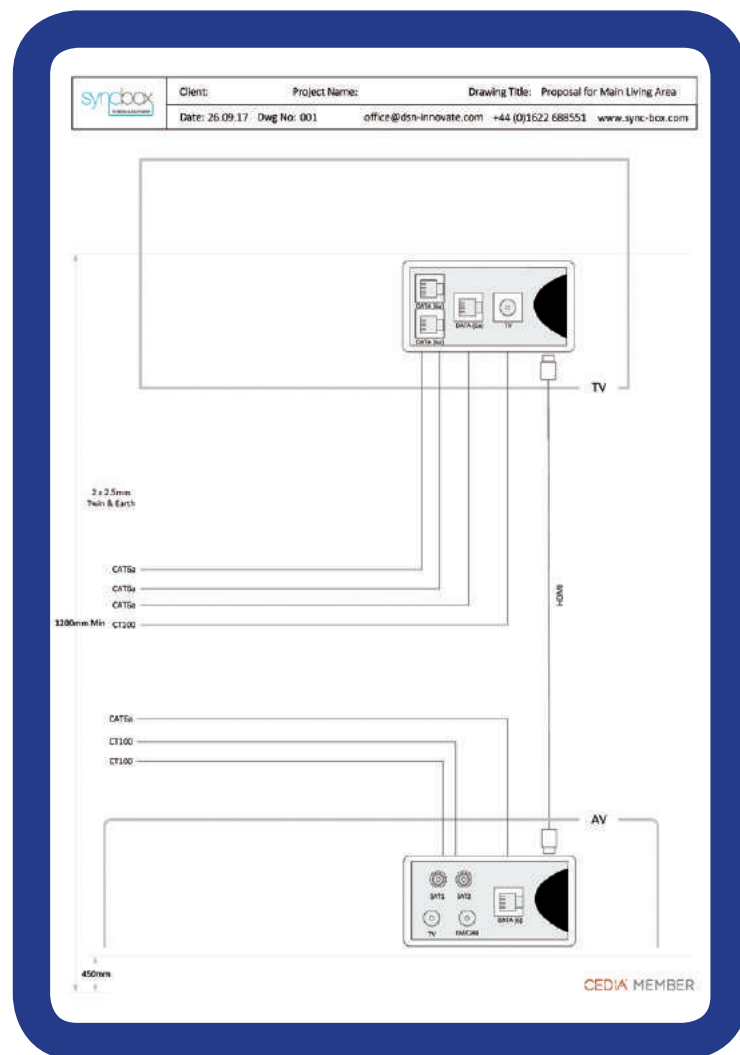
Syncbox Media contains no additional modules so is consequently ideal for homeowners who want to completely customise a Syncbox to their own wiring specification to create a recessed media plate.

6 Syncbox 7.1

Syncbox 7.1 speaker plate includes 7 keystone speaker terminals and a keystone phono (sub woofer) providing a perfect solution for installations where a surround sound system is installed to a speaker plate.

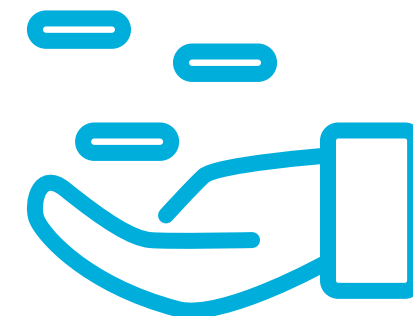


TECHNICAL SERVICE



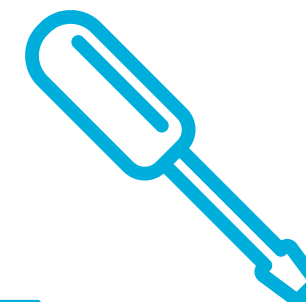
SPECIFICATION PROCESS

Syncbox saves 80% of the customer's time when producing a bespoke pack.



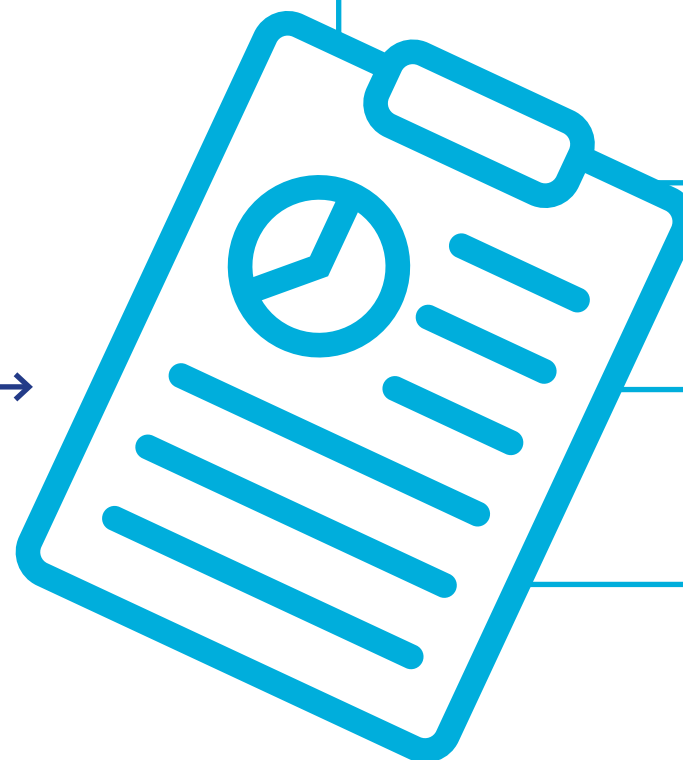
COST

Like for like comparison, Syncbox is 27% less than the cheapest unbranded system!



INSTALLATION

Syncbox is 33% quicker to install versus a traditional double socket and double media system!

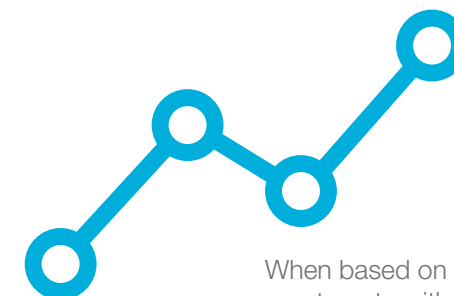


SAVE TIME AND MONEY

A proven time & motion study has been conducted to highlight the savings Syncbox offers when compared to a traditional system.

Costs compared on a like-for-like basis at trade prices

SUMMARY



When based on 400 apartments with 2 x Syncbox packs in each, the total cost saving equates to over £11,500 and 266 installation hours!

Designed specifically for the Property/Commercial market, who intend to order in large quantities. A bespoke pack enables the client to simplify the order & specification process. Syncbox takes care of everything. We simply take any existing/desired configurations and convert to a bespoke Syncbox system. Technical drawings are supplied to the customer for approval. It really is as simple as that! Upon approval, the bespoke Syncbox system is given a unique Sku code to make the ordering process easy!

TV, Media, Power and Speaker systems are everywhere in properties. The beautiful finish of a home can be seriously compromised with a huge media plate in the middle of a wall or cables hanging down from underneath a TV. We refer to this as wall acne. Syncbox is beautifully discreet and solves the problem of wall acne everywhere in your home.

Syncbox Media System, connecting Sky / Cable / DVD or games console to your TV with all cables and connections protected and invisible.



Syncbox Hub receives all incoming services including aerial & satellite connections plus outgoing signals to all Syncbox Units.

Syncbox Speaker System, allowing up to 7 multi-room speakers to be terminated to 1 x Syncbox. Cables protected and invisible, leaving only your beautiful speakers visible.



Syncbox TV Point behind your Lounge TV, allows you to wall mount your TV with the slimmest bracket available, resulting in your TV flat to the wall, with all cables and connections protected and invisible.

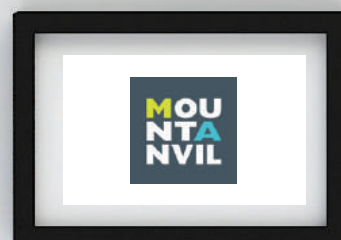


Family area TV, wall mounted using the Syncbox TV point. Syncbox will sit beautifully behind any TV, in any room!



THE SYNCBOX LIFESTYLE

RECOGNISED BY OUR PEERS!



Syncbox have received countless awards from many of its trade peers and other governing organisations.

Many of the UK's most prestigious property developers are using Syncbox as a standard fitting in all new developments.

sync-box.com

 @_syncbox

 geniusSyncbox

 syncbox_

Enquiries
+44(0) 1622 688 551

syncbox



Made in Britain
©2017 Dsn Ltd. All rights reserved



Made from 100% recyclable material
Love your environment, we do

Registered Design No:

Back box 002248088-0001

Front box 002248088-0002

Cover plate 002248088-0003

UK Patent Application No:

Hybrid installation box GB1613610.3