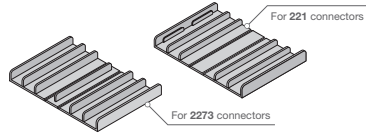
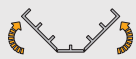


2273 & 221 Connector Adapters

The Wagobox 2273 and 221 connector adapters should be used when using Wago 2273 and 221 series connectors with the Wagobox to ensure compliance with BS EN 60670-22.

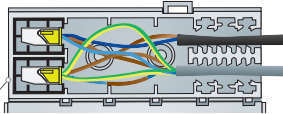


The adapters are intended to be fitted into the connector receptacles inside the Wagobox. Each adapter provides a slot designed to hold the appropriate connector type safely and securely preventing excessive movement and inadvertent extraction of the connector or connected wire.



The adapters are supplied flat. To use, fold into a rectangular shape with the side fins facing inward. Insert into the connector receptacle.

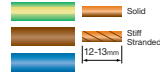
Shown with 2273 adapters and connectors in position



WAGO Pushwire Connectors



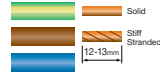
773 Series



773 - 102/104/106/108

2, 4, 6, 8 port pushwire
 Conductor sizes:
 0.75mm² - 2.5mm² Solid Core
 1.5mm² - 2.5mm² Stiff Stranded
 Current rating: 24A
 Voltage rating: 400V/4KV

773 Series

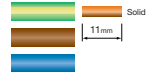


773 - 173

3 port pushwire
 Conductor sizes:
 2.5mm² - 6.0mm² Solid Core
 2.5mm² - 6.0mm² Stiff Stranded
 Current rating: 41A
 Voltage rating: 400V/4KV



2273 Series

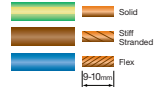


2273 - 202/203/204/205/208

2, 3, 4, 5, 8 port pushwire
 Conductor sizes:
 0.5mm² - 2.5mm² Solid Core
 Current rating: 24A
 Voltage rating: 400V/4KV



222 Series

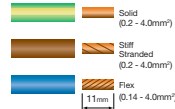


222 - 412/413/415

2, 3, 5 port pushwire
 Conductor sizes:
 0.08mm² - 2.5mm² Solid Core/Stranded
 0.08mm² - 4.0mm² Flex Core
 Current rating: 32A
 Voltage rating: 400V/4KV



221 Series



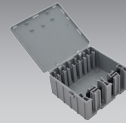
221 - 412/413/415

2, 3, 5 port lever
 Conductor sizes:
 0.2mm² - 4.0mm² Solid Core/Stranded
 0.14mm² - 4.0mm² Flex Core
 Current rating: 32A
 Voltage rating: 400V/4KV



Wagobox XL

A general purpose electrical enclosure for 1 or 2 circuits



- For Wago 2273 & 221 Connectors
- Connect 6242Y NYM-J & Flex cables
- Lighting & Power Circuits
- Heating Control Circuits
- Maintenance Free
- XLA Version for Wago 773 and 222 Connectors

Wagobox-Light

Electrical junction box designed for lighting circuits



- For Wago 224, 260 and 294 connectors
- Connect Twin & earth and Flex cables
- Quick Downlight connections
- No screws or fiddly clamps
- BS EN 60670-22 certified
- Compact (39 x 29 x 95mm)

Wagobox-Capsule

IP68 Adaptable Electrical junction box for external cabling



- For Wago Pushwire and Lever connectors
- Connect Armoured, Hi Tuff and LV cables
- Ideal for Garden Lighting
- Available in Grey, Black and Clear
- BS EN 60529 IP68 certified
- Direct burial or surface mounting bracket options

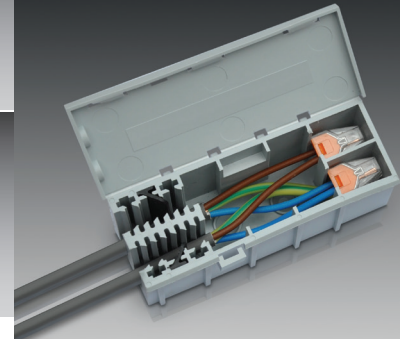


CONNEXBOX

T: +44 (0) 1353 666 011 F: +44 (0) 1353 669 038
 W: www.connexbox.com E: sales@connexbox.com

Wagobox a junction box innovation

Quick, easy to fit, compact and configurable



CONNEXBOX

Installation Instructions

For BS EN 60670-22 Accessory

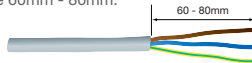
The Wagobox enclosure is designed for use with the Wago 222 and 773 series of connectors but can also be used with both the 221 and 2273 series when installed in combination with the appropriate adapter. The Wagobox is rated 400V/4KV and can support conductor sizes from 0.08mm² to 6.0mm². The maximum number of supported individual conductor connections is 24 at 1.00mm² and 6 at 6mm². The cable clamp can grip cables with an overall diameter between 3mm and 8mm.

If you are in anyway unsure about any of the following steps or how to connect the circuit, then consult a qualified electrician.

Quicker, Simpler, Safer...

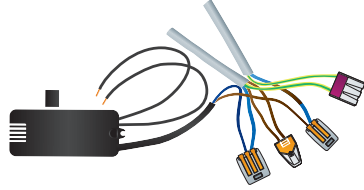
The Wagobox is easy to use and fast to fit, just follow the steps below and see how the Wagobox will revolutionise the way you work.

- Strip back the outer protective sheath of the cable 60mm - 80mm.

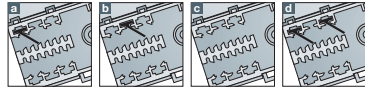


- Select the appropriate 773, 222, 2273 or 221 connectors (use the selection guide overleaf). Strip insulation to the length applicable to the connector being used.

- Connect the cables together to make the circuit.

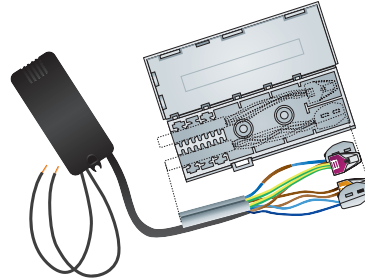


- Configure the cable clamp by putting the black plastic grippers in the correct position for the size of cable being used.

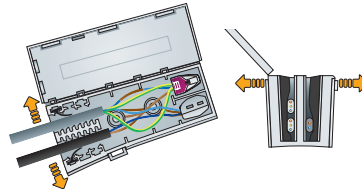


- Tight Position** for small cables such as 1.0 and 1.5mm² twin and earth.
- Offset Position** for medium size cables such as 2.5 and 4.0mm² twin and earth.
- No gripper** required for large cables such as 6.0mm² twin and earth.
- Optional extra gripper** position for extra grip on very small 2 core flex. (May require the purchase of an additional gripper)

- Arrange your terminals and slide them into the receptacles.

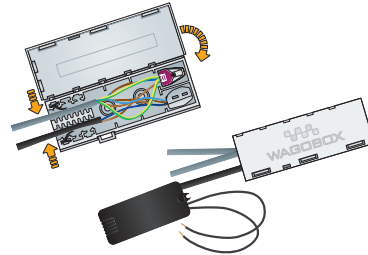


- When fitting the cables into the cable clamp the sides of the box need to be eased apart to make an opening. It is normal for the entrance to be splayed apart with the cables in place.

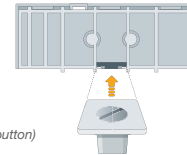


- Try to keep cables of a similar size together in the same slot and simply push them into the slot as far as they will go.

Once all the cables are installed, firmly squeeze the gripper end of the box together and **snap shut the lid** so that it is held securely by the 3 locking tabs.



- If required the Wagobox can be fitted to a surface using the Wagobox mounting button feature. (May require purchase of mounting button)



Installation Instructions

For BS 5733-MF (Maintenance Free Accessory)

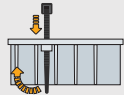
In situations where you need to install a Wagobox in an inaccessible location the following instructions must be followed. This ensures the completed accessory complies with the requirements of BS 5733 for a maintenance free accessory. Only WAGO 773 and 222 Series terminals, or 2273 & 221 with adapters, are permitted for use with a Wagobox in maintenance free locations.

- Apply BS 5733 Rating Requirements. Please note the terminal ratings in the table below are different to those published by WAGO. These terminal ratings must be used when selecting the appropriate terminals to assemble a BS 5733 maintenance free accessory.

Terminal Models	Max Terminal Current Rating	Max Cable csa mm ²	Max Aggregate Current (Max I _{ag})
773 2273	20A	2.5	50A
222 221	20A	2.5	50A
773 - 173	32A	6.0	64A

The Max Aggregate Current (I_{ag}) is the sum of all the possible currents through the Wagobox in normal use. This limit must not be exceeded. Usually the max I_{ag} equals the number of phase terminals in the Wagobox multiplied by the rating of the OPD* for the circuit. There are some exceptions to this rule, so if you are in anyway unsure how to calculate the maximum aggregate current please consult a qualified electrician. For further information on calculating the Max I_{ag} of a Wagobox configuration please visit: www.connexbox.com.

- Follow Wagobox BS EN 60670-22 installation instructions ensuring all phase terminals are fitted into the receptacles in the Wagobox.
- Secure the Wagobox lid using the tie-wrap locking point. Ensure the completed Wagobox is not covered by insulating material.



*Over current Protective Device