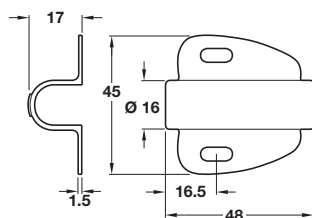


## Loox housing for switch, surface mounting



- > Only for use with Ø 12 mm Loox switches shown page 325
- > Suitable for 32 mm series-drilled holes
- > Plastic
- > Order qty: 1 pc

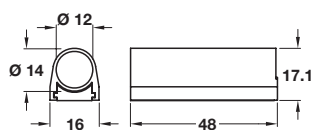


Finish	Cat. No.
Silver coloured	833.89.090

## Loox housing for switch, surface mounting



- > Only for use with Ø 12 mm Loox switches shown page 325
- > Suitable for 32 mm series-drilled holes
- > Plastic
- > Order qty: 1 pc



Finish	Cat. No.
Silver coloured	833.89.092

## Loox extension lead for switches



- > For use with Loox switches
- > Black plastic
- > Order qty: 1 pc



- > Can also be used for the multi switch box and the multi driver box
- > Lead length from driver to switch max. 6 m
- > The drill hole Ø for the male plug and the female socket of the switch leads is 12 mm



Length	2000 mm
Cat. No.	833.89.067