



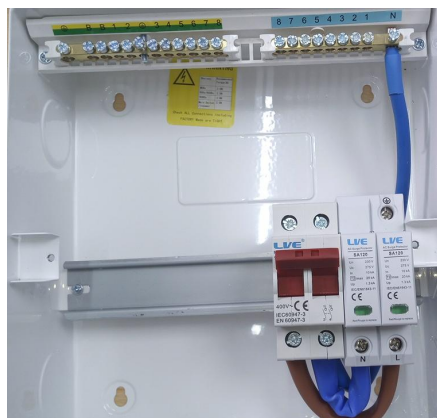
SAMODKIT INSTALLATION INSTRUCTIONS

- 1) Remove Front cover and disconnect the Blue cable from the bottom of the Main Switch



Disconnect Blue Cable and remove Main Switch

Clip new Main Switch and Surge Arrestor to din rail and connect Brown and Blue cables as shown below



BLUE CABLE
FROM NEUTRAL BAR

BLUE/BROWN CABLE
FROM KIT

Please ensure all connections are to the correct torque settings
Electricity is Dangerous if in any doubt please consult a Qualified Electrician